

Copyright Gitta's Charted Petit Point 2012

Page Layout

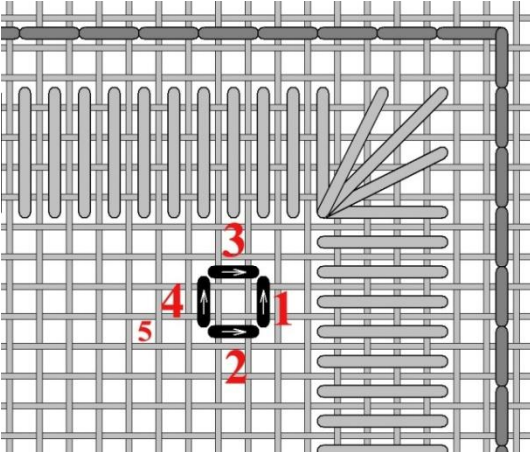
Page 1	Page 2
Page 3	Page 4

Shaded areas indicate where pattern is overlapping

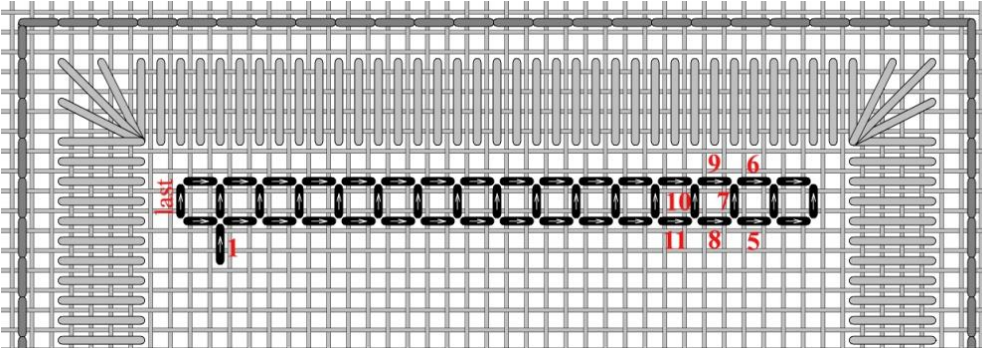
Pulled Thread Sampler 16th square - Signature Square

Four-sided Stitch & Alphabet

This stitch is composed of four stitches. When stitching down to complete a stitch, the needle will always come up in the opposite diagonal corner thus creating a cross stitch on the reverse side.

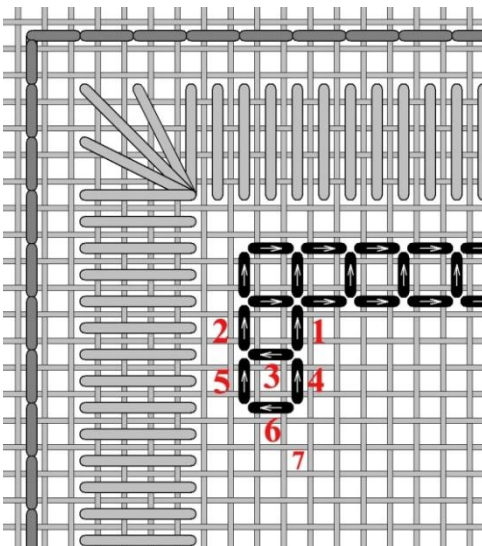


Using the #8 perle cotton, bring needle up, to begin stitch **1**, 4 linen threads down and 2 linen threads to the left of the top right corner. Stitch down over 2 linen threads, come up at the beginning of stitch **2**, and pull. Stitch down into the same hole as the start of stitch **1**, come up at stitch **3**, diagonally up and to the left by 2 linen threads, and pull. Stitch down to complete stitch **3** and come up at stitch **4**. Pull. Stitching down to complete stitch **4** also completes the square. Stitch up at **5**, and follow the same sequence as in the first square. Stitch **5** is the same as stitch **2** in the first square.

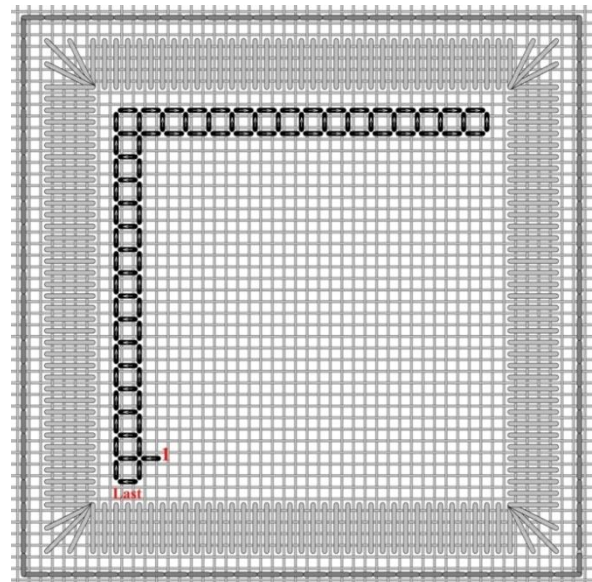


Follow the sequence to complete the top row. The **last** stitch stops 2 linen threads from the left satin stitch border.

Come up at **1**, 4 linen threads down and 2 linen threads to the right of the last stitch, and pull.



The sequence is the same as before. You can either opt to stitch vertically down, or turn your linen 90° counter clockwise so you are again working right to left. Stitch until you are once again 2 linen threads from the satin stitch border.



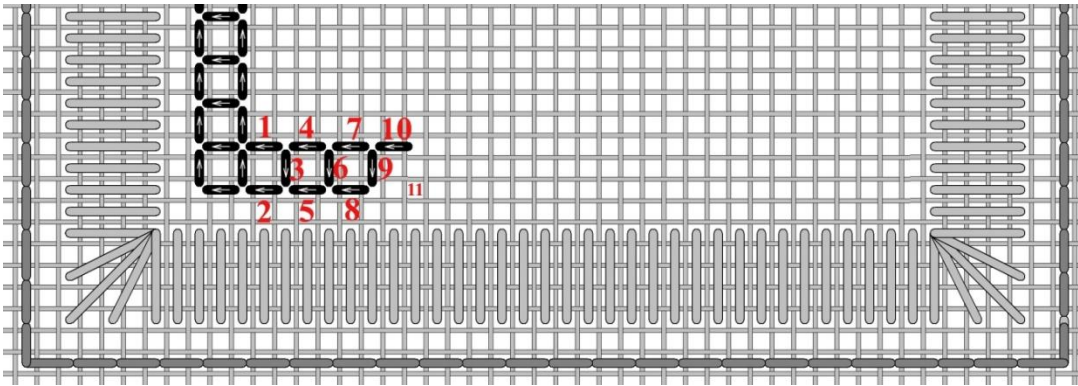
Gitta's your one stop stitching shop!!

271 Lakeshore Road East, Mississauga, Ontario L5G 1G8

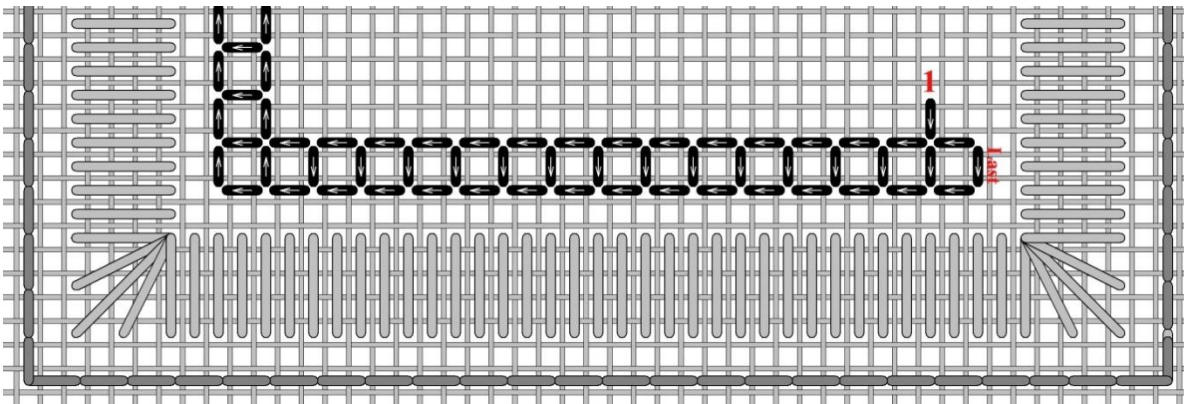
Tel: 905-274-7198

Website: www.gittas.com

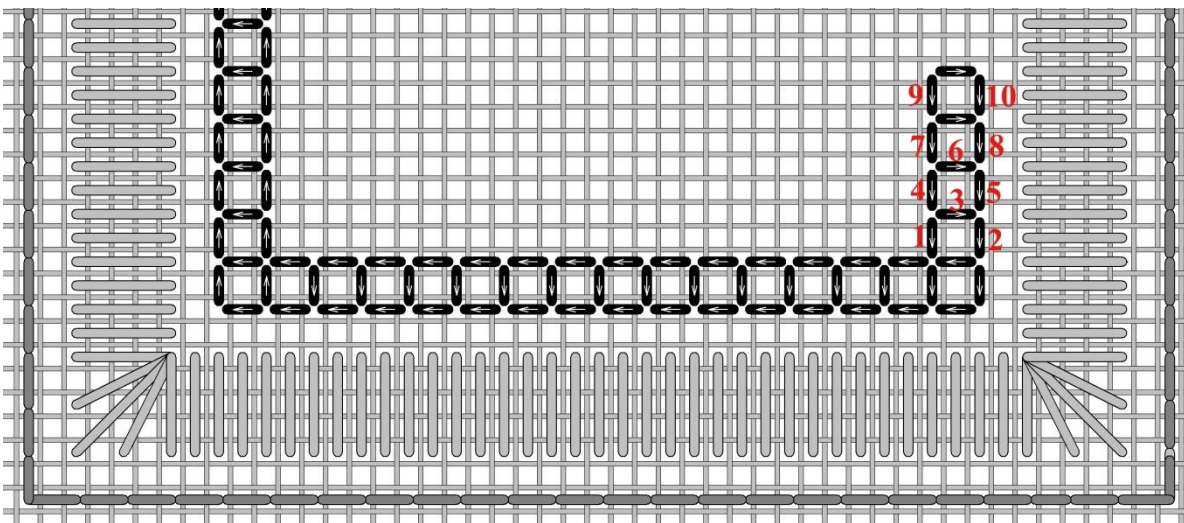
Email: questions@gittas.com



This diagram shows the third side of this four-sided stitch border. Once again turn your piece 90° counter clockwise to work right to left. The stitch again will be 2 linen threads from the satin stitch border.



1 is the start of the first stitch on the last side of this border.



Follow the sequence, working up the final side to complete the border.

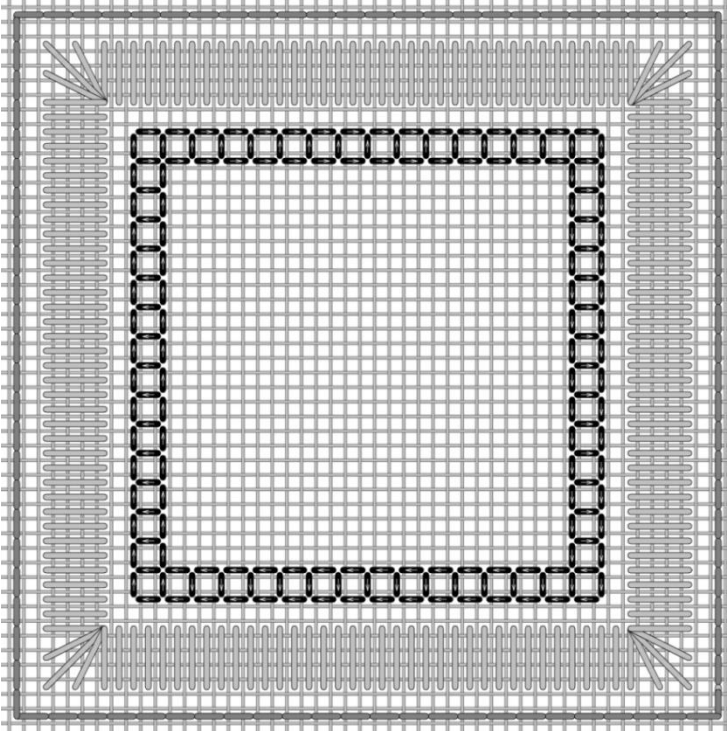
Gitta's your one stop stitching shop!!

271 Lakeshore Road East, Mississauga, Ontario L5G 1G8

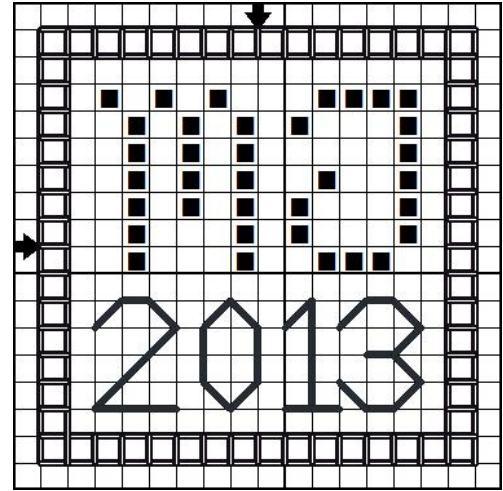
Tel: 905-274-7198 Email: questions@gittas.com

Website: www.gittas.com

This is the completed square of the four-sided stitch.



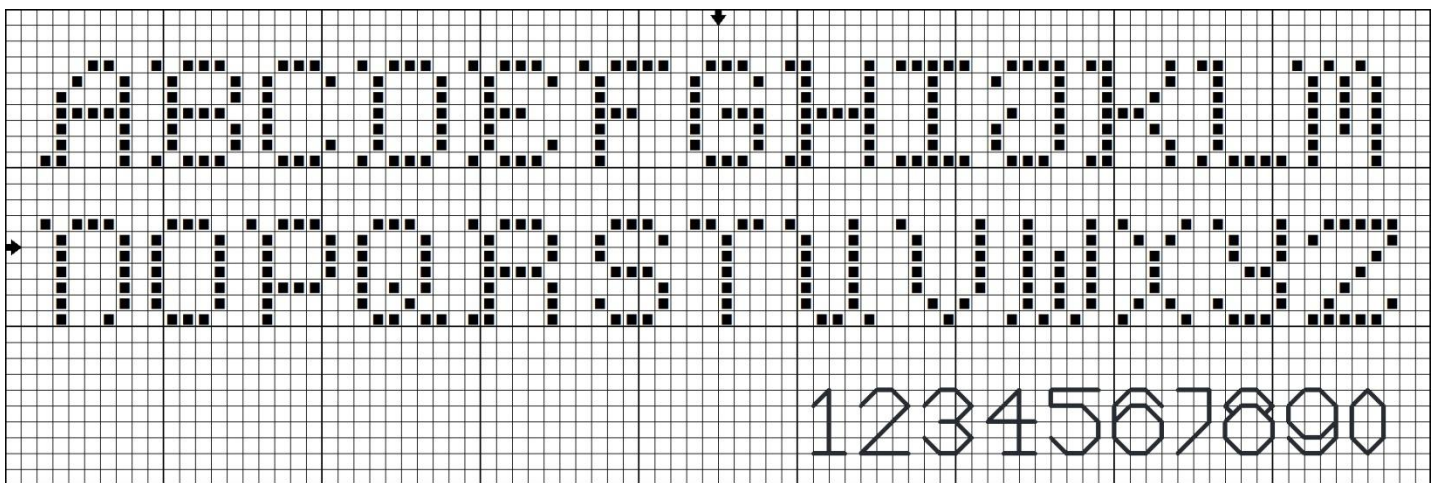
The next step is to insert your initials and the year of completion. This grid is the opening within the satin stitch border and each square is 2 linen threads.



This diagram shows the positioning of the four-sided border, two initials and the year. The initials are cross stitched and the year is backstitched over two linen threads.

Using the alphabet below insert your initials into the square. The initials are all 7 stitches high and either 5 or 6 stitches wide. Within the four-sided pulled thread border there are 14 stitches available. Leaving one stitch open on either side of the letters and one stitch between the letters leaves 11 stitches available for the letters. If your initials are both 6 letters wide start in from the border by 1 linen thread rather than 2.

Cross stitch initials and back stitch the year using the perle cotton. If your perle cotton and linen colour are similar then use the Wildflower thread used for the satin stitch border.



Gitta's your one stop stitching shop!!

271 Lakeshore Road East, Mississauga, Ontario L5G 1G8

Tel: 905-274-7198

Website: www.gittas.com

Email: questions@gittas.com