

# Pulled Thread

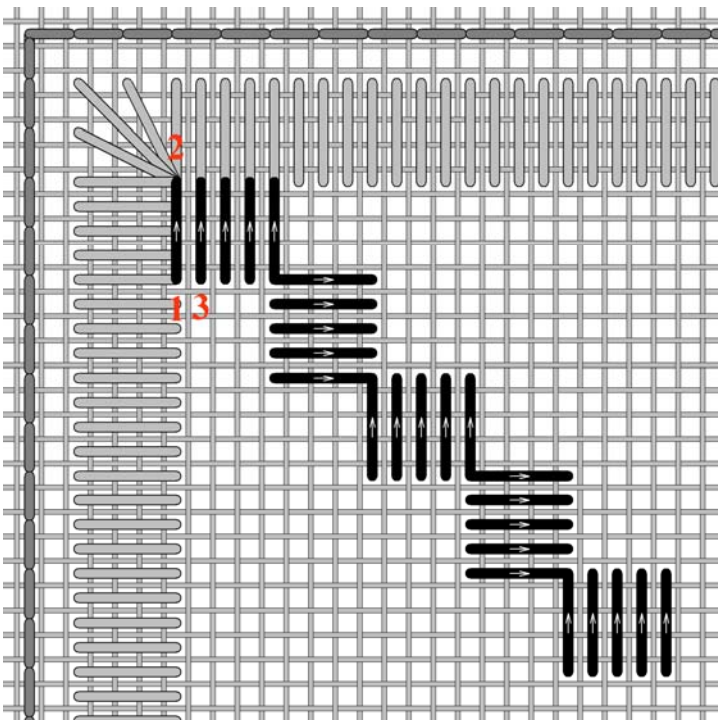
Pulled thread is a technique which creates a pattern of holes by pulling stitches tight and compressing the fabric threads. No fabric threads are cut, the airiness of each stitch pattern is determined by how tightly the stitches are pulled.

As the desired effect of pulled work is to create an open pattern, one generally uses a thread that matches the linen colour. Moreover, due to the tension put on the thread, a strong twisted thread is recommended such as Perle Cotton.

There are a variety of stitch families with many variations, each creating its own unique texture. Each stitch can also appear differently, simply by how tightly or loosely the stitch is pulled.

A great number of pulled stitches are based on Satin stitches; these can be worked horizontally, vertically, and diagonally. They can also vary as to how many satin stitches are within a cluster, and over the number of linen threads they are stitched.

## 1. Satin Step Stitch



Start by coming up at #1. This is in the fourth linen hole down from the corner and shares the hole with the satin border stitch. Stitch down at #2, which is over 4 linen threads from #1 (the fourth hole above #1).

Come up at #3, and pull tightly. When pulling your thread tight with your stitching hand support the stitch with your other hand; hold the stitch between your thumb (on top of linen) and index finger (underneath the linen) as you pull the thread tight.

Repeat for 5 satin stitches. Your next set of 5 satin stitches will be stitched horizontally.

Repeat these groups of 5 satin stitches in this stair step pattern all the way to the bottom.

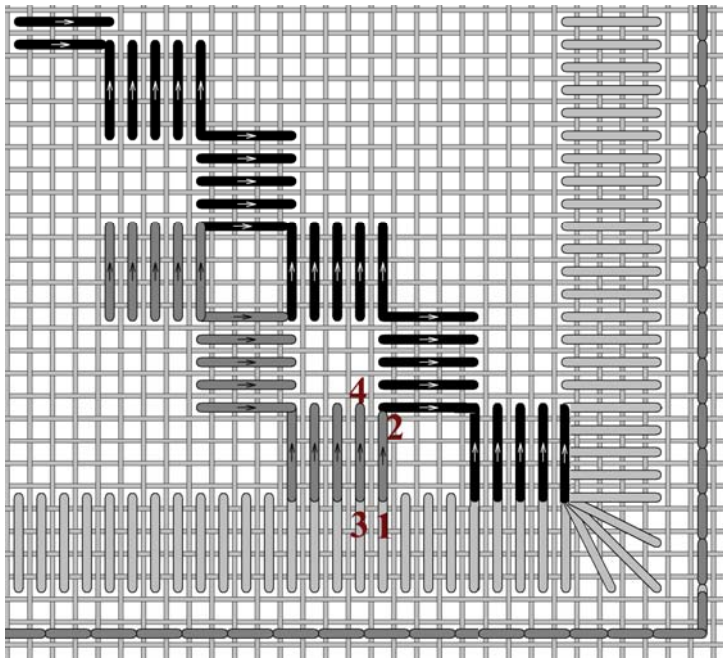
---

*Gitta's* your one stop stitching shop!!

271 Lakeshore Road East, Mississauga, Ontario L5G 1G8

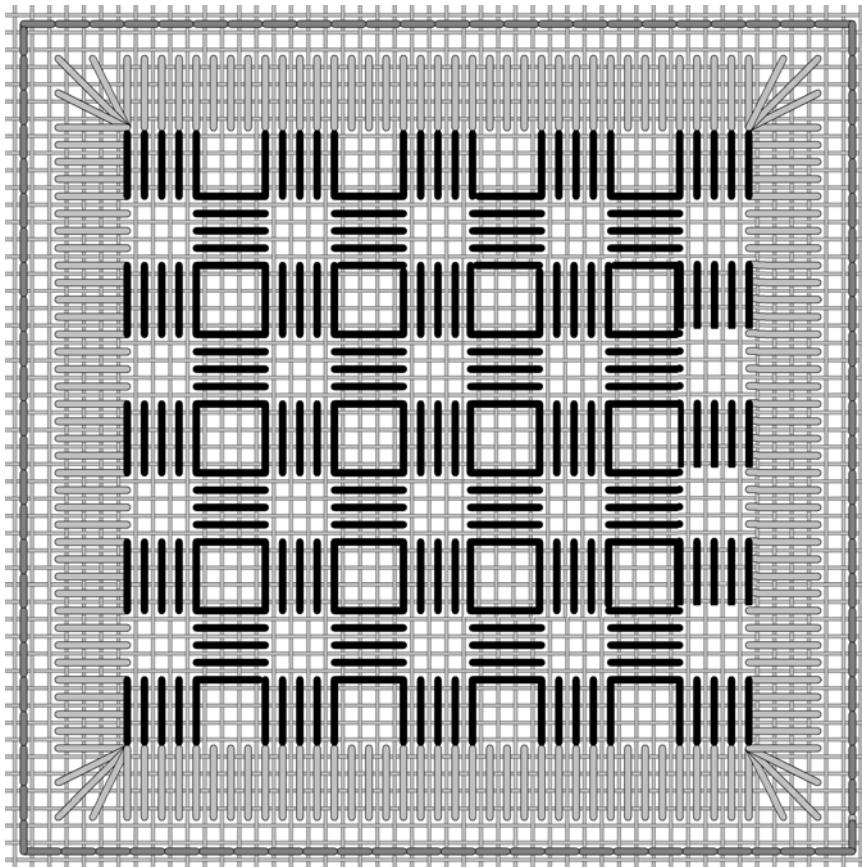
Tel: 905-274-7198 Email: [questions@gittas.com](mailto:questions@gittas.com)

Website: [www.gittas.com](http://www.gittas.com)



Once this first path is complete slip your thread through the satin stitch border on the reverse side towards the start of the next path at #1.

Continue stair stepping in groups of 5 satin stitches diagonally up and down the square until it is completely filled in.



This diagram shows the square complete.

*Gitta's* your one stop stitching shop!!

271 Lakeshore Road East, Mississauga, Ontario L5G 1G8

Tel: 905-274-7198 Email: [questions@gittas.com](mailto:questions@gittas.com)

Website: [www.gittas.com](http://www.gittas.com)