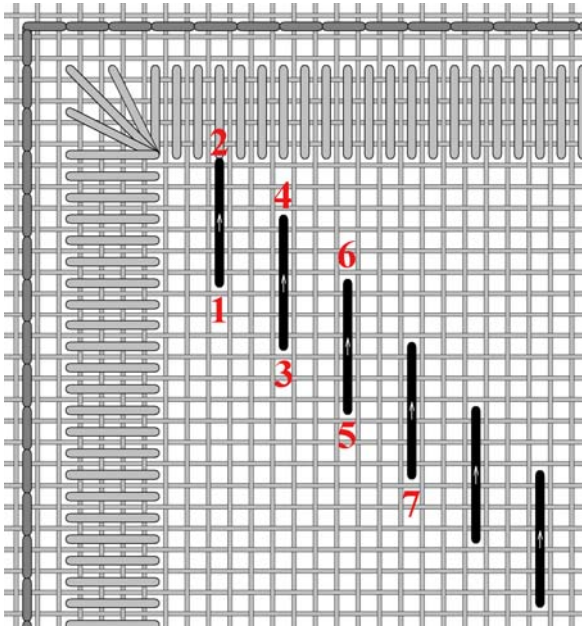


11. Diagonally Raised Band Filling

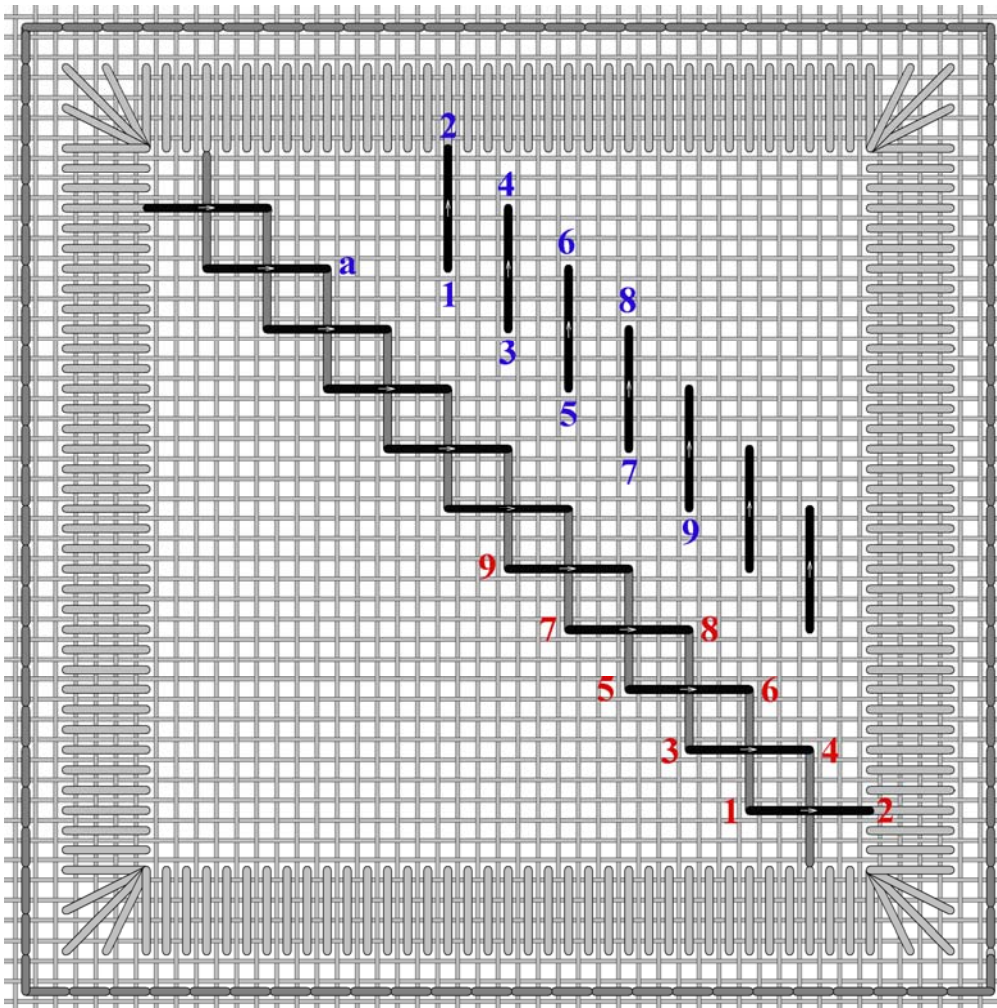


This stitch is worked in diagonal bands. The vertical stitches are worked first starting in the top left corner and moving towards the bottom right. The horizontal stitches are then worked upwards from the bottom right to the top left, completing the band.

Begin by stitching up at **1** (6 linen threads down and 3 linen threads to the right from the top left corner), stitch down at **2** (6 linen threads up from **1**). Come up at **3** (3 linen threads down and 3 linen threads to the right of **1**), and pull. If working in hand only pull slightly. Pulling too tightly will greatly distort the square. If working with a frame, you can pull a little more.

Next stitch down at **4**, (6 linen threads up from **3**), up at **5** (3 linen threads down and 3 linen threads to the right of **3**) and pull.

Continue in this manner, until you reach the bottom. The arrows indicate the direction of the stitches.



To complete the second pass in the first band follow the sequence of **red** numbers up towards the top left corner from the bottom right corner. **1** is 6 linen threads to the left and 3 linen threads up from the bottom right corner.

This second pass is a little easier as you will stitch into holes already created from the first pass.

The Before beginning the second band slip under the satin stitch border by a few stitches.

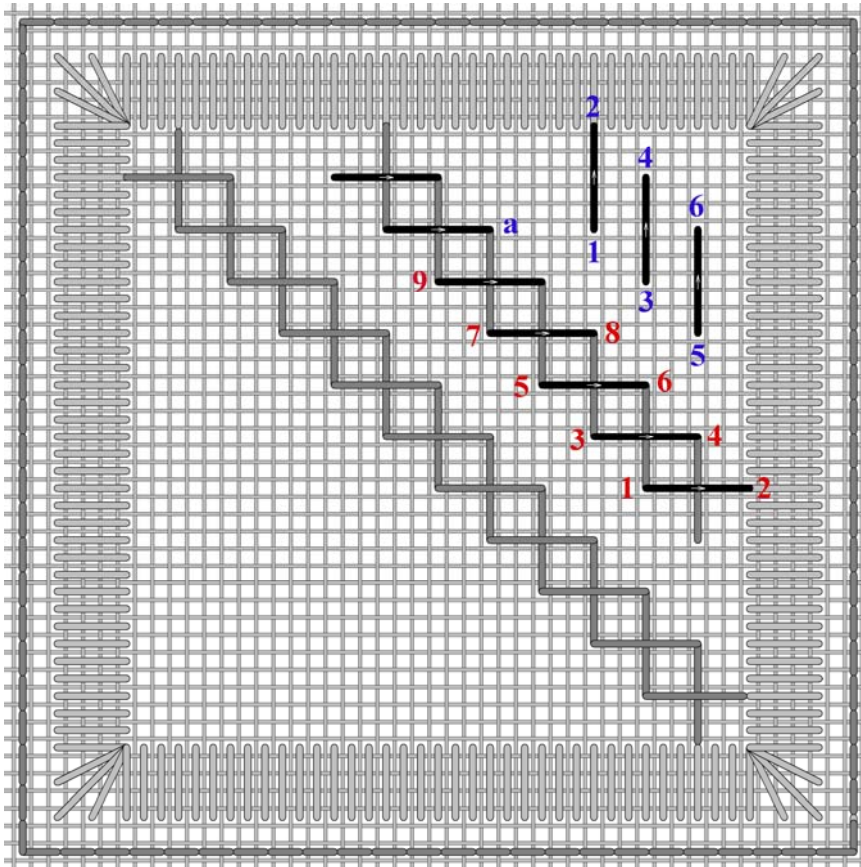
When beginning the second band, again, first stitch the vertical stitches, beginning at **1**. **1** is 6 linen threads to the right of **a**. Then stitch down at **2**, 6 linen threads up from **1**. Come up at **3** (three linen threads down and 3 linen threads to the right of **1**), and pull. Follow the sequence of **blue** numbers; 7 vertical stitches.

Gitta's your one stop stitching shop!!

271 Lakeshore Road East, Mississauga, Ontario L5G 1G8

Tel: 905-274-7198 Email: questions@gittas.com

Website: www.gittas.com

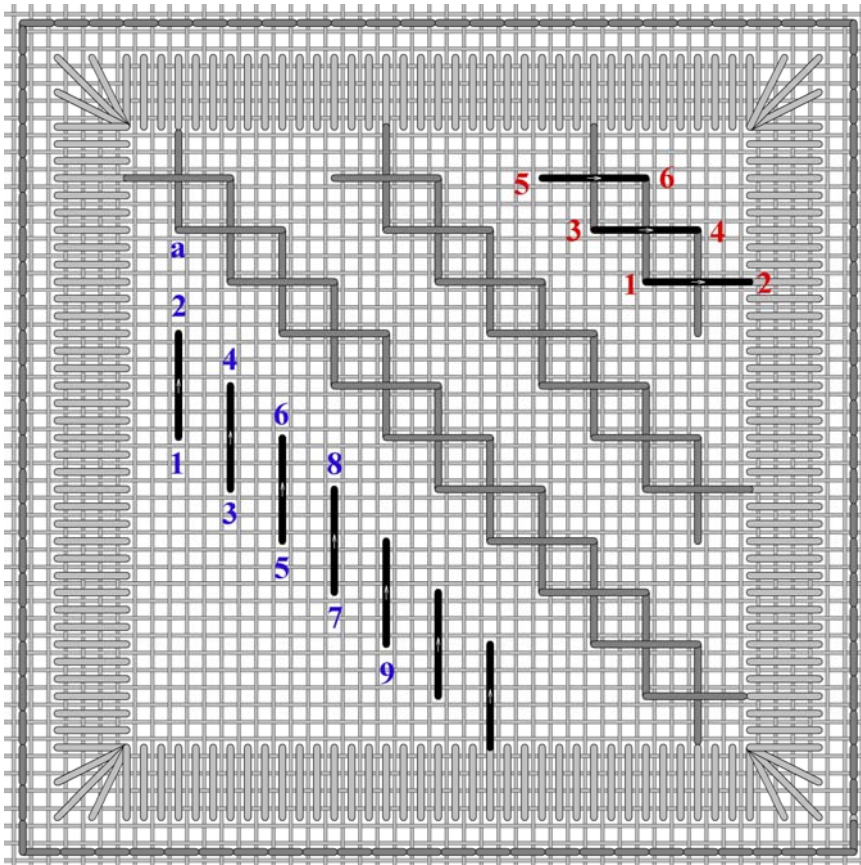


The following bands are the same as the previous ones.

The second pass in the second diagonal band begin at **1**. **1** is 3 linen threads to the left and 3 linen threads up from the bottom of the last vertical stitch in this band. Then follow the **red** numerical sequence.

The third band begins at **1**. **1** is 6 linen threads to the right of **a**. Then follow the **blue** numerical sequence.

Don't forget to always slip under a few satin stitches in the border before beginning the next pass.



Following the **red** numerical sequence completes the third band.

To complete the bands in the bottom half of the the square, slip under satin stitches in the border to reach the beginning of the first band. Start with **1**. **1** is 12 linen threads down from **a**.

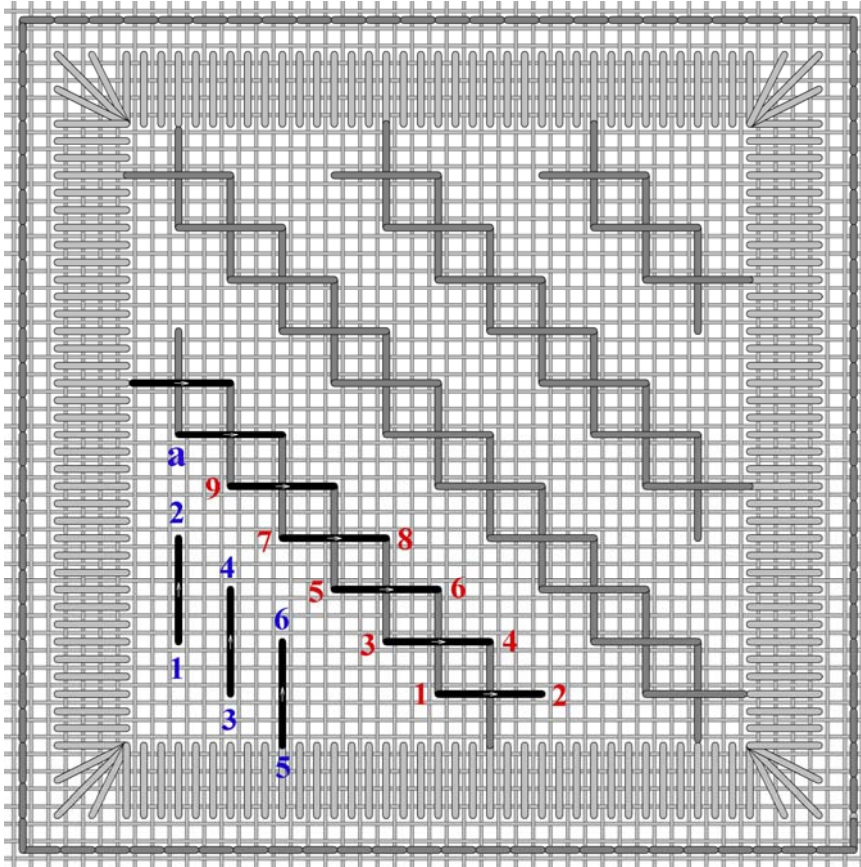
Then follow the **blue** numerical sequence.

Gitta's your one stop stitching shop!!

271 Lakeshore Road East, Mississauga, Ontario L5G 1G8

Tel: 905-274-7198 Email: questions@gittas.com

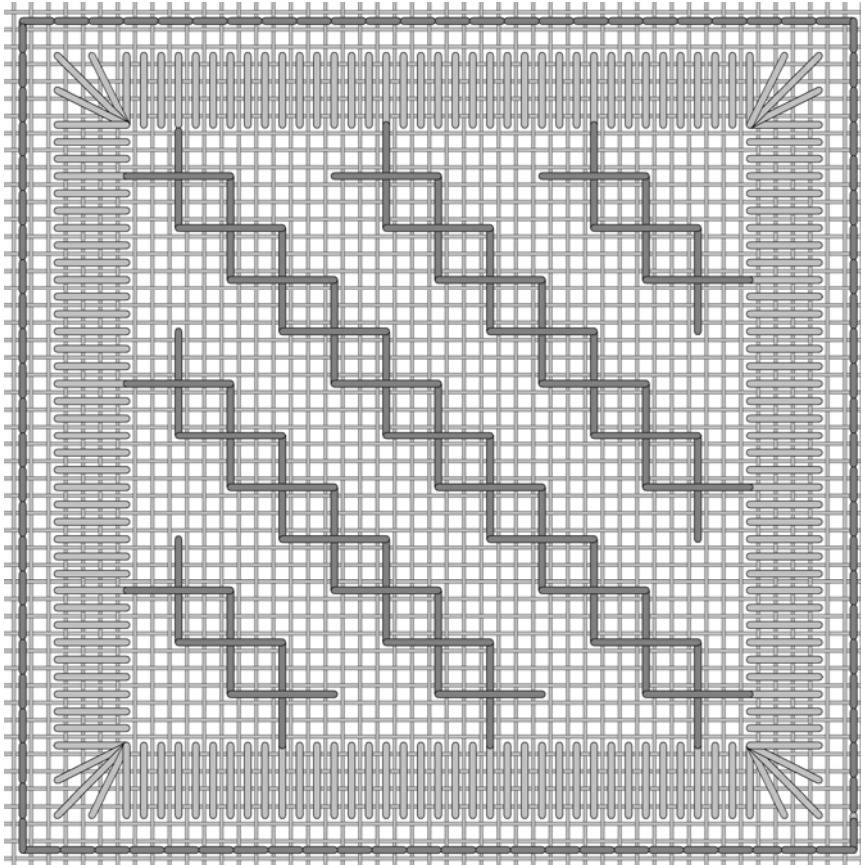
Website: www.gittas.com



The second pass in the second diagonal band begin at **1**. **1** is 3 linen threads to the left and 3 linen threads up from the bottom of the last vertical stitch in this band. Then follow the **red** numerical sequence to complete the band.

The final band begins at **1**. **1** is 12 linen threads down from **a**.

Then follow the **blue** numerical sequence.



Complete the last band with the horizontal stitches.

This is the completed square.

Gitta's your one stop stitching shop!!

271 Lakeshore Road East, Mississauga, Ontario L5G 1G8

Tel: 905-274-7198 Email: questions@gittas.com

Website: www.gittas.com