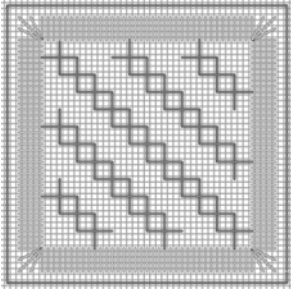
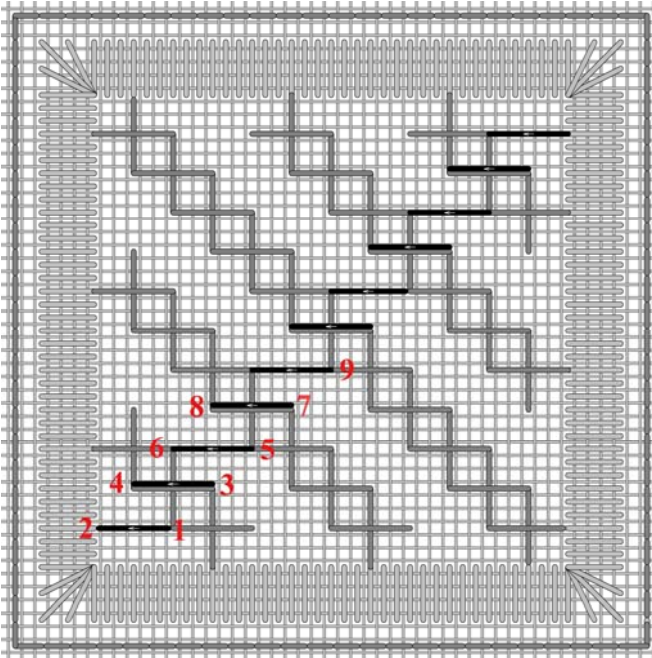


12. Open Trellis Filling



Complete the Diagonally Raised Band (Square #11) first; this is from my post of last Friday, November 2nd.

The Open Trellis then builds on the Diagonally Raised Band. The Open Trellis is created by adding similar bands of stitches, but in a diagonal slant from the bottom left to the top right. Some of these stitches will share the same holes as those from the original bands.

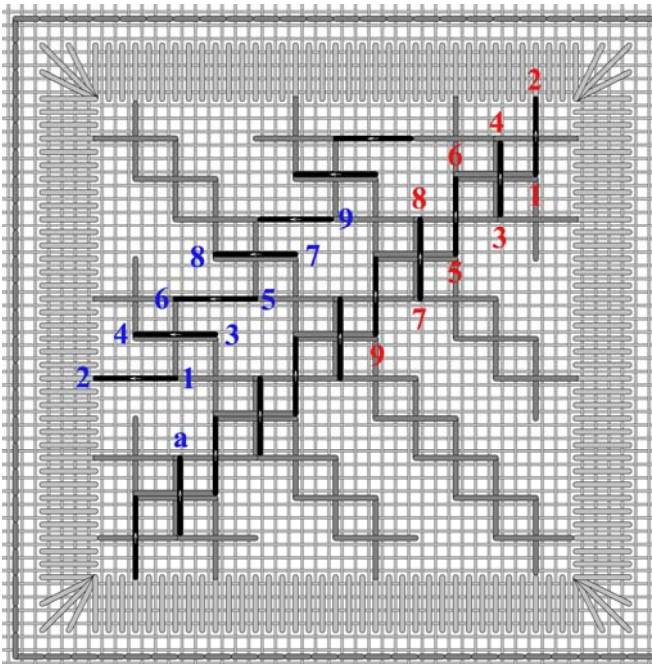


The Open Trellis stitch is created by making diagonal bands in the opposite direction of the Diagonally Raised Bands. Stitch up at **1** (6 linen threads to the right and 3 linen threads up from the bottom left corner), stitch down at **2** (6 linen threads to the left **1**). Come up at **3** (3 linen threads up and 3 linen threads to the right of **1**), and pull.

Next stitch down at **4**, (6 linen threads to the left of **3**), up at **5** (3 linen threads up and 3 linen threads to the right of **3**) and pull.

Continue in this manner, until you reach the top (11 stitches). The arrows indicate the direction of the stitches.

These satin stitches share the holes created from the first diagonal bands. Some (stitch **3-4**, **7-8**, **11-12**, etc.) even share the same space with some of the stitches from the Diagonal Raised bands. Ensure these lay parallel to each other.



To complete the second pass in this first band follow the sequence of **red** numbers down towards the bottom left corner from the top right corner. **1** is 3 linen threads to the left and 6 linen threads down from the top right corner.

This second pass is a little easier as you will stitch into holes already created from the first pass. For those stitches sharing the same space with the Diagonally Raised band ensure they are laying nicely beside each other.

Before beginning the second band slip under the satin stitch border by a few stitches.

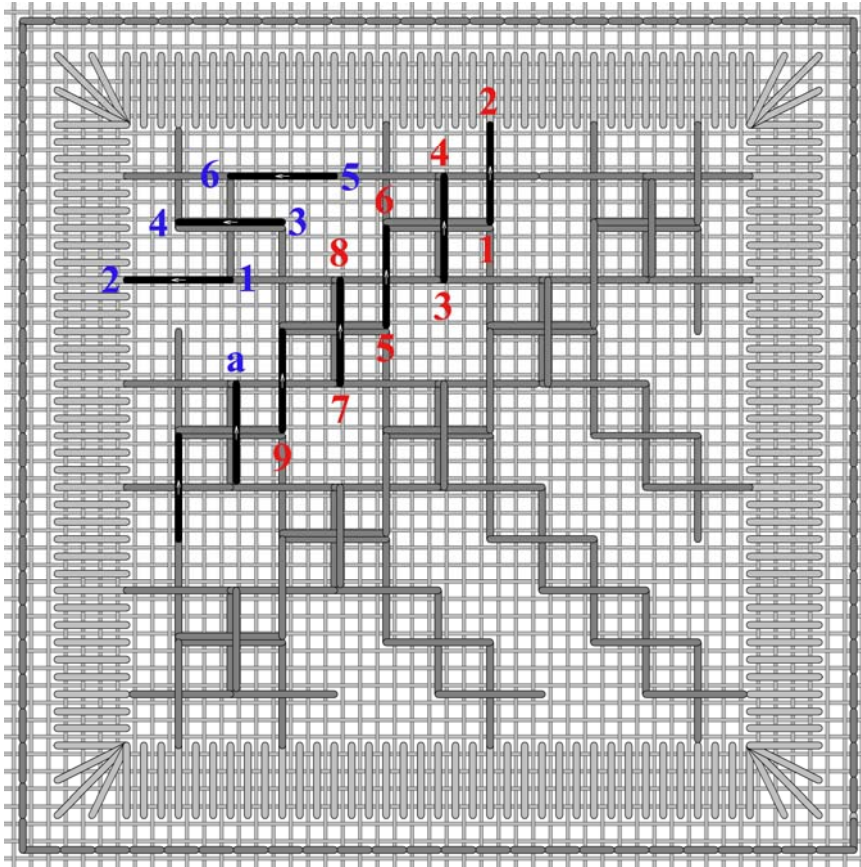
When beginning the second band, again, first stitch the horizontal stitches, beginning at **1**. **1** is 6 linen threads above **a**. Then stitch down at **2**, 6 linen threads to the left of **1**. Come up at **3** (three linen threads up and 3 linen threads to the right of **1**), and pull. Follow the sequence of **blue** numbers; 7 horizontal stitches.

Gitta's your one stop stitching shop!!

271 Lakeshore Road East, Mississauga, Ontario L5G 1G8

Tel: 905-274-7198 Email: questions@gittas.com

Website: www.gittas.com

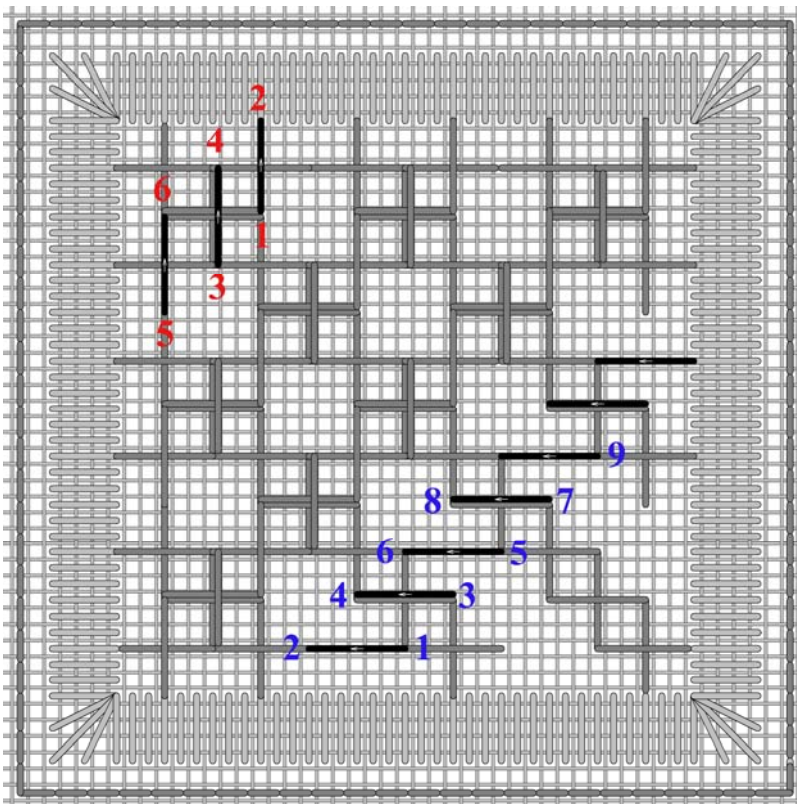


The following bands are the same as the previous ones.

The second pass in the second diagonal band begin at **1**. Follow the **red** numerical sequence.

The third band begins at **1**. **1** is 6 linen threads above **a**. Then follow the **blue** numerical sequence.

Don't forget to always slip under a few satin stitches in the border before beginning the next pass.



The second pass in the third diagonal band begin at **1**. **1** is 3 linen threads to the left and 3 linen threads down from the bottom of the last vertical stitch in this band. Then follow the **red** numerical sequence to complete the band.

To complete the bands in the bottom right half of the square, slip under satin stitches in the border to reach the beginning of the first band. Start with **1**. **1** is 18 linen threads to the right of and 3 linen threads up from the bottom left corner.

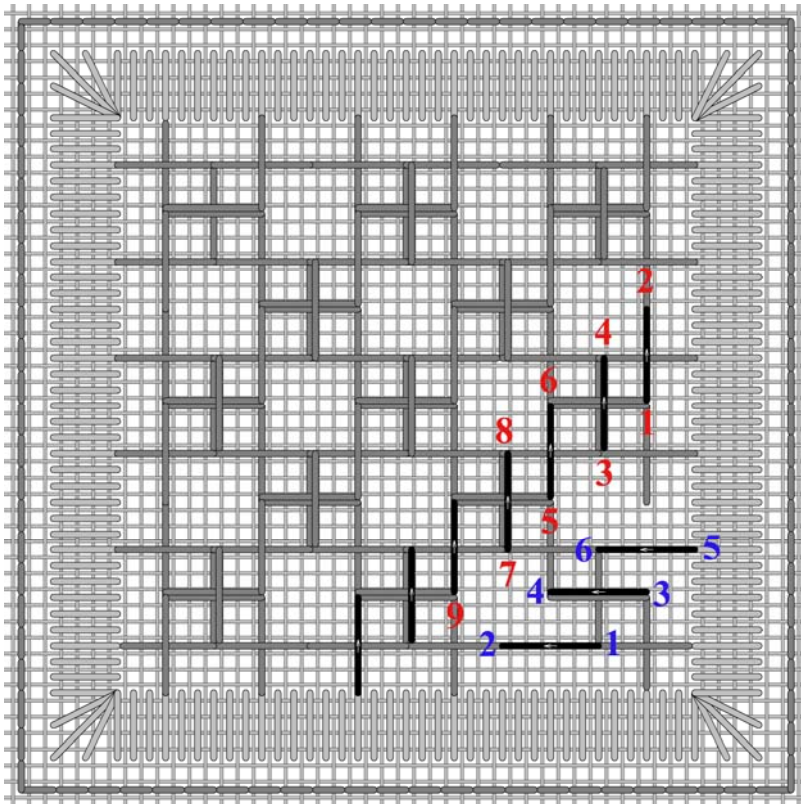
Then follow the **blue** numerical sequence. (7 stitches)

Gitta's your one stop stitching shop!!

271 Lakeshore Road East, Mississauga, Ontario L5G 1G8

Tel: 905-274-7198 Email: questions@gittas.com

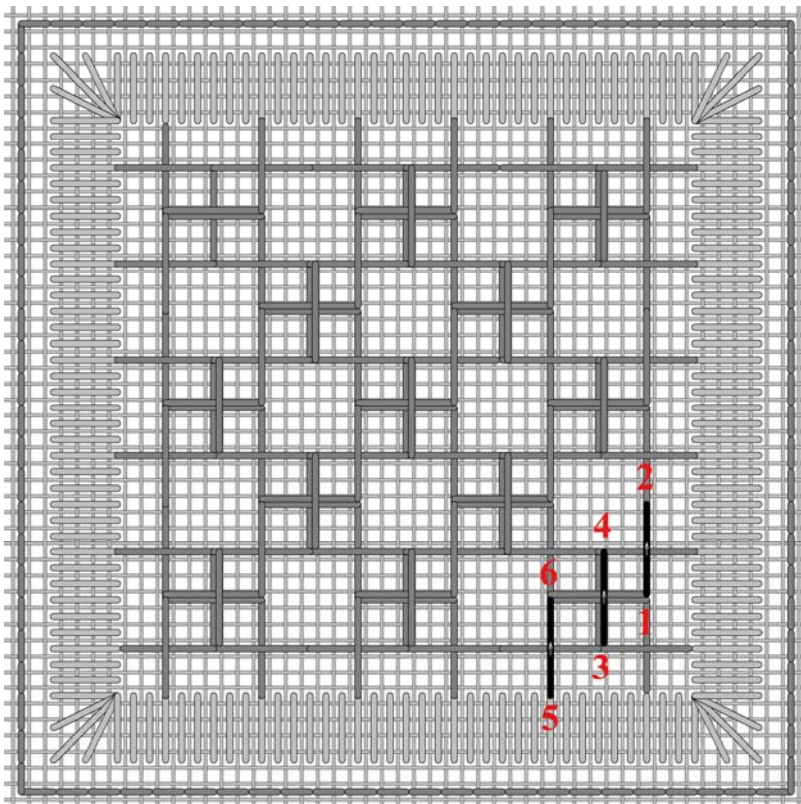
Website: www.gittas.com



The second pass in this band begin at **1**. **1** is 3 linen threads to the right and 3 linen threads down from the bottom of the last horizontal stitch in this band. Then follow the **red** numerical sequence to complete the band.

The final band begins at **1**. **1** is 6 linen threads to the left of and 3 linen threads up from the bottom left corner.

Then follow the **blue** numerical sequence.



Complete the last band with the vertical stitches.

This is the completed square.

Gitta's your one stop stitching shop!!

271 Lakeshore Road East, Mississauga, Ontario L5G 1G8

Tel: 905-274-7198 Email: questions@gittas.com

Website: www.gittas.com