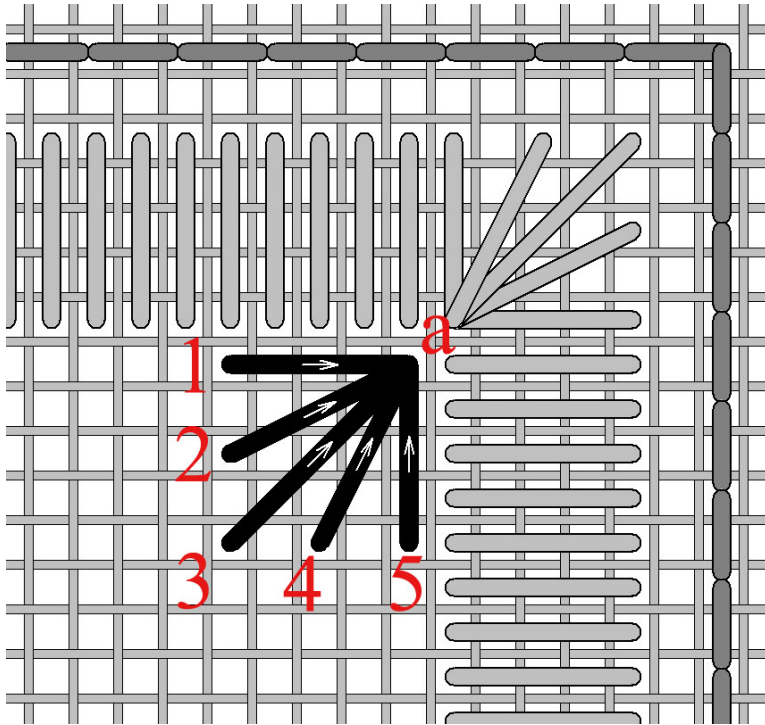


# 14. Leaf Stitch

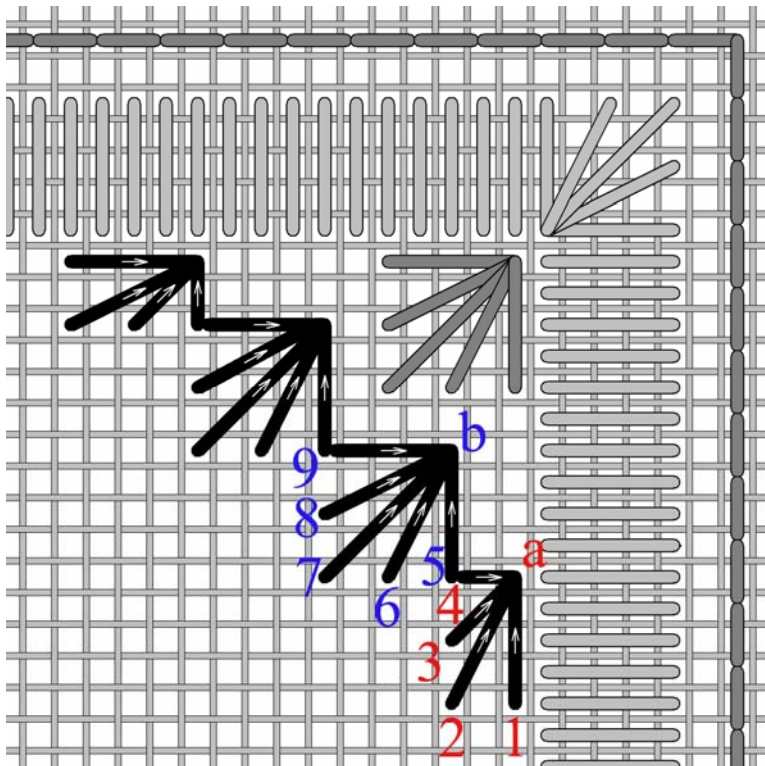


The Leaf Stitch is started in the top right corner and then worked in diagonal rows down towards the bottom left corner.

**Rather than number the start and end of each stitch, in these stitch diagrams, the start of each stitch is numbered.** Stitch up at the numbers and stitch down at **a**.

Stitch **1** begins 1 linen thread down and 5 linen threads to the left of the top right corner. Stitch down at **a**, 4 linen threads to the right of **1**. Stitch up at **2**, 2 linen threads down from **1**, and pull. Stitch down at **a**, up at **3**, 2 linen threads down from **2**, and pull. Stitch down at **a**, up at **4**, 2 linen threads to the right of **3**, and pull. Stitch down at **a** up at **5**, 2 linen threads to the right of **4**, and pull. Stitch down at **a**.

The Leaf stitch appears like a partial eyelet stitch, with all the stitches ending in **a**, the hole at **a** will be more pronounced.



On the reverse side slip under a few satin stitches down towards **a**.

In this row there are 4 groupings of satin stitches. Note that the last and first stitch of each satin stitch grouping share the same hole, as seen with stitch **4** and stitch **5**.

The leaf stitches in the next row are always offset from the previous row. The pivot hole, **b**, of the first full satin stitch grouping in this row is 2 linen threads to the left and 2 linen threads down from the last stitch, stitch **5**, of the leaf stitch in the first diagram.

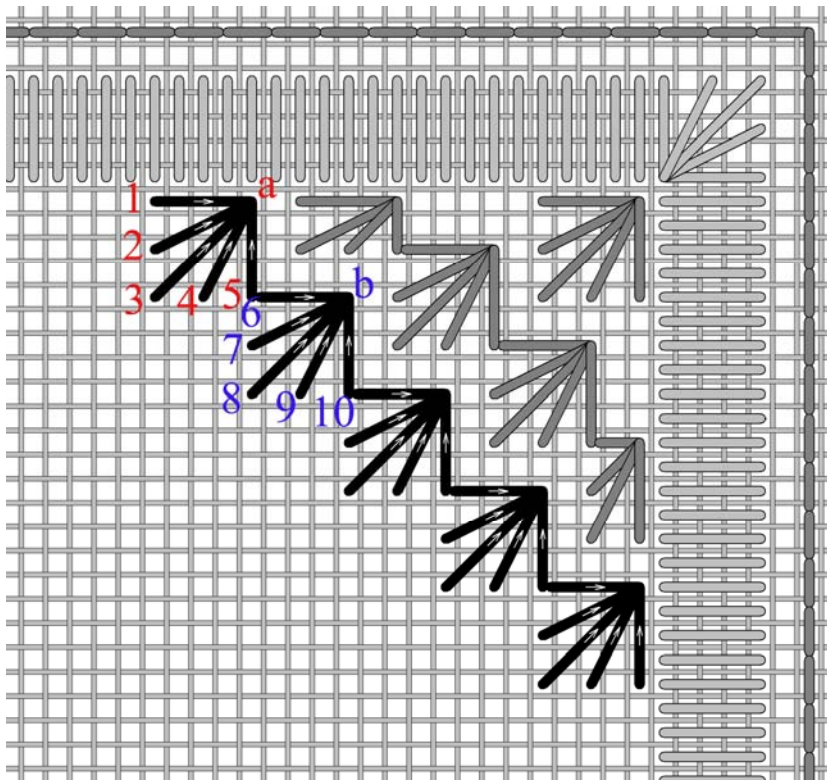
Thus, the first grouping in this row is comprised of compensating stitches, 1/2 of a leaf stitch.

To begin this row, stitch up at **1**, 10 linen threads down from the bottom of the last stitch (**5** in the first diagram). Stitch down at **a**, up at **2** and pull. Follow the stitch order.

The first stitch, stitch **5**, of the second grouping share the same hole with stitch **4**, the last stitch of the previous grouping.

Continue towards the end of the row.

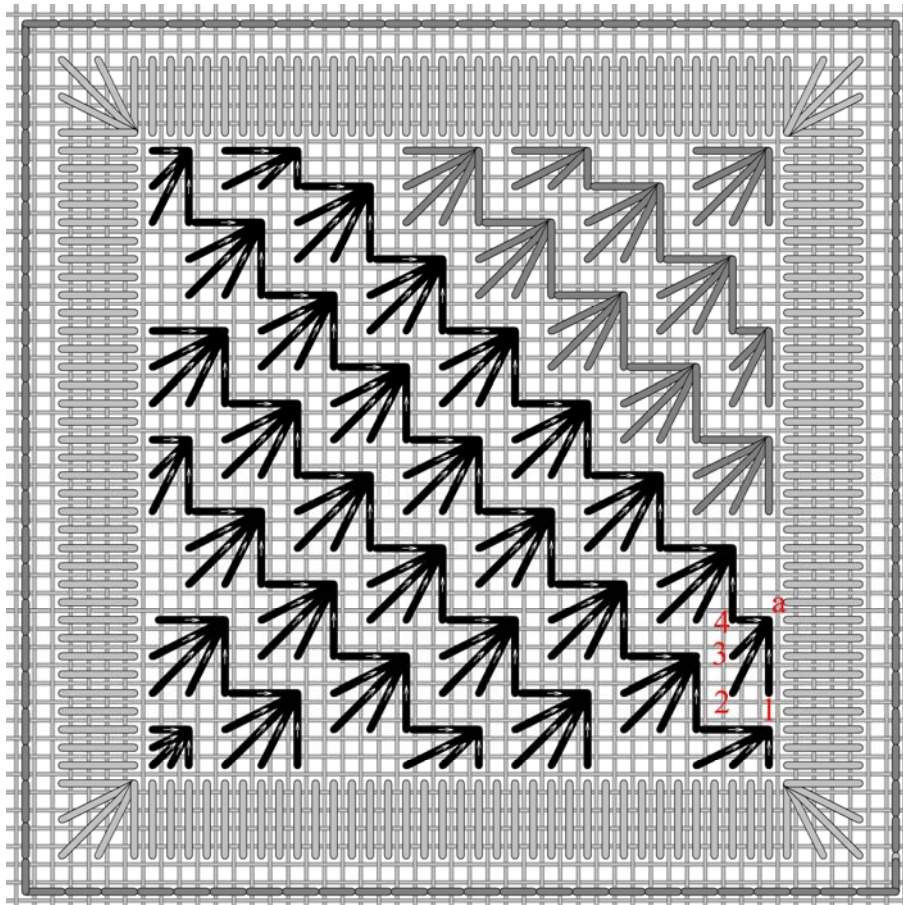
*Gitta's* your one stop stitching shop!!



On the reverse side slip under a few satin stitches towards **a**.

To begin this row, stitch up at **1**, 6 linen threads to the left of the last stitch in the previous row. Stitch down at **a**, up at **2** and pull. Follow the stitch order.

Complete leaf stitch groupings fit into this row. No compensating groups were required.



This diagram shows the completed square, and the start of the next row. Arrows indicate the direction of the stitches.

To begin this row, stitch up at **1**, 10 linen threads down from the bottom of the last stitch

Follow the sequences as in previous rows.

Although I started this stitch in the top right corner, it is recommended (as with most pulled thread stitches) to make your first row (or path) along the longest section of the enclosed area.

*Gitta's* your one stop stitching shop!!

271 Lakeshore Road East, Mississauga, Ontario L5G 1G8

Tel: 905-274-7198 Email: [questions@gittas.com](mailto:questions@gittas.com)

Website: [www.gittas.com](http://www.gittas.com)