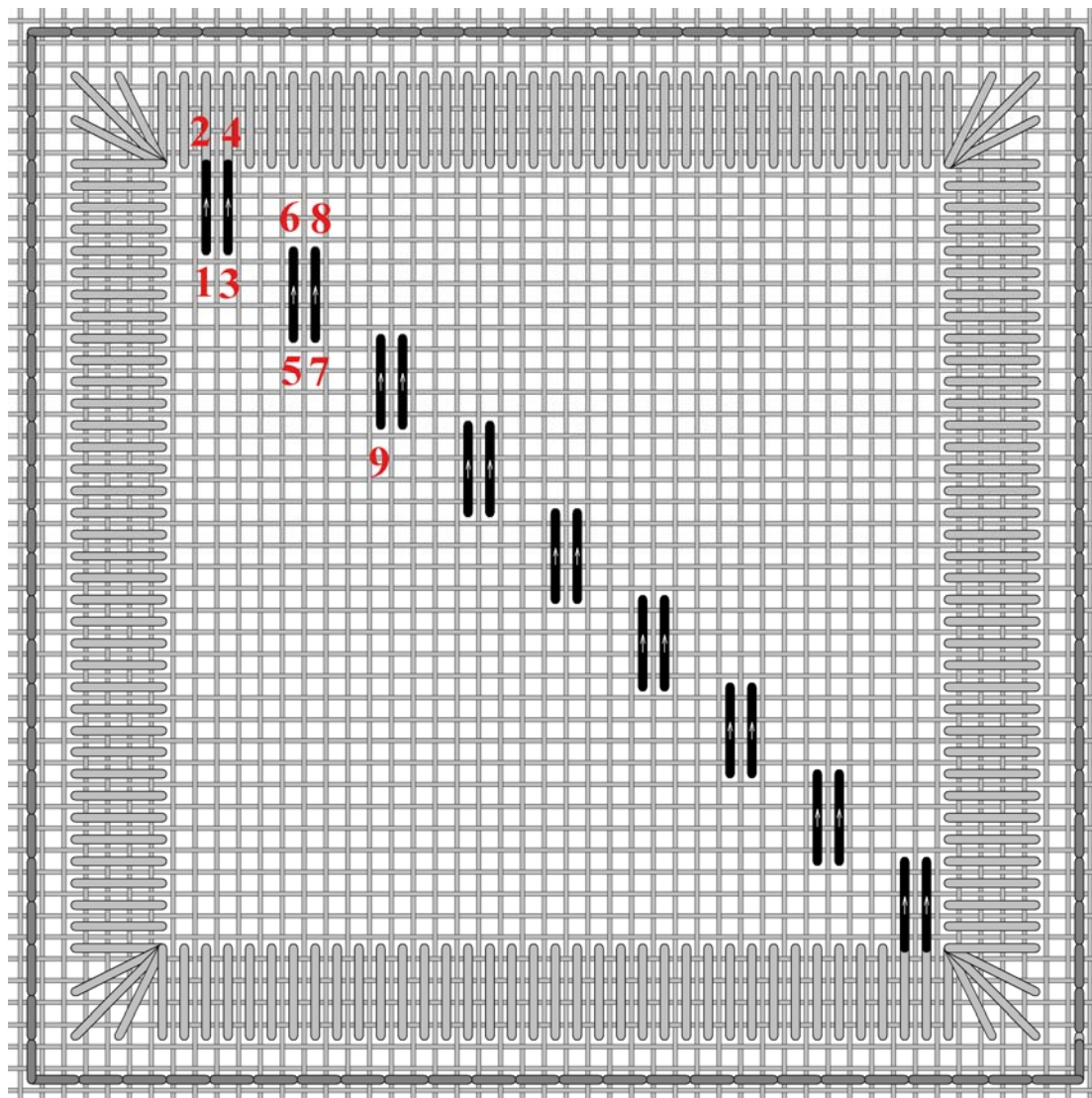


2. Spaced Satin Stitch

This is a great filling stitch for backgrounds.

This stitch can be worked in rows, but I found the stitches looked more uniform when working them on the diagonal.



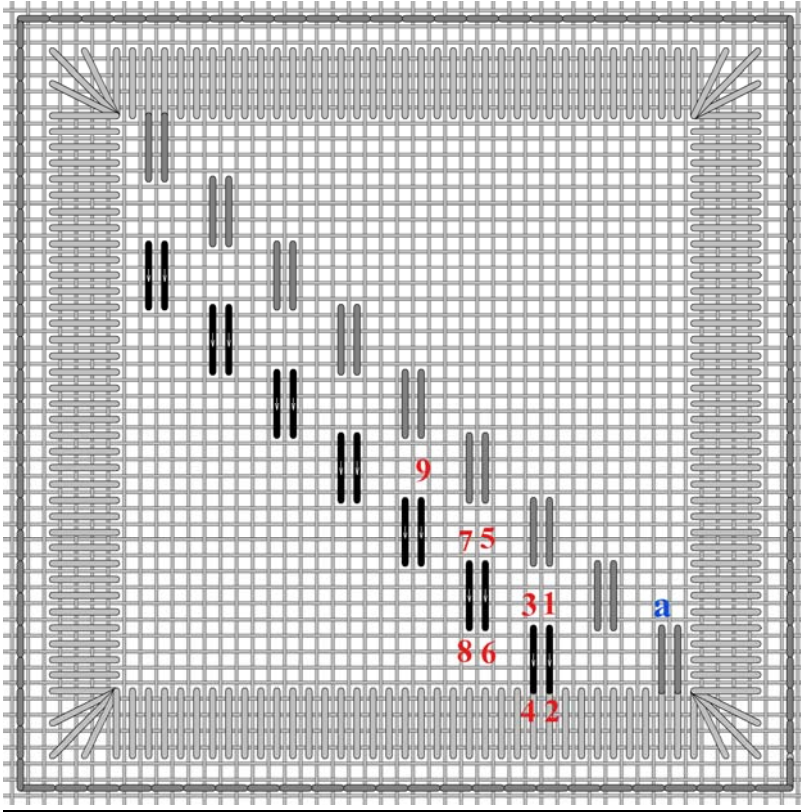
Come up at **1.** and stitch down at **2.** (over 4 linen threads). Stitch up at **3.** which is the next hole to the right of **1.** Pull the thread tight. Stitch down at **4.** The next group of 2 satin threads begins at **5.** (4 linen threads down and 3 linen threads to the right of **3.** When stitching up at **5.** pull thread tight.

Always pull tightly on your stitching thread when stitching up at the odd numbers.

Repeat this pattern all the way down to the bottom right corner of the square.

Gitta's your one stop stitching shop!!

271 Lakeshore Road East, Mississauga, Ontario L5G 1G8
Tel: 905-274-7198 Email: questions@gittas.com
Website: www.gittas.com



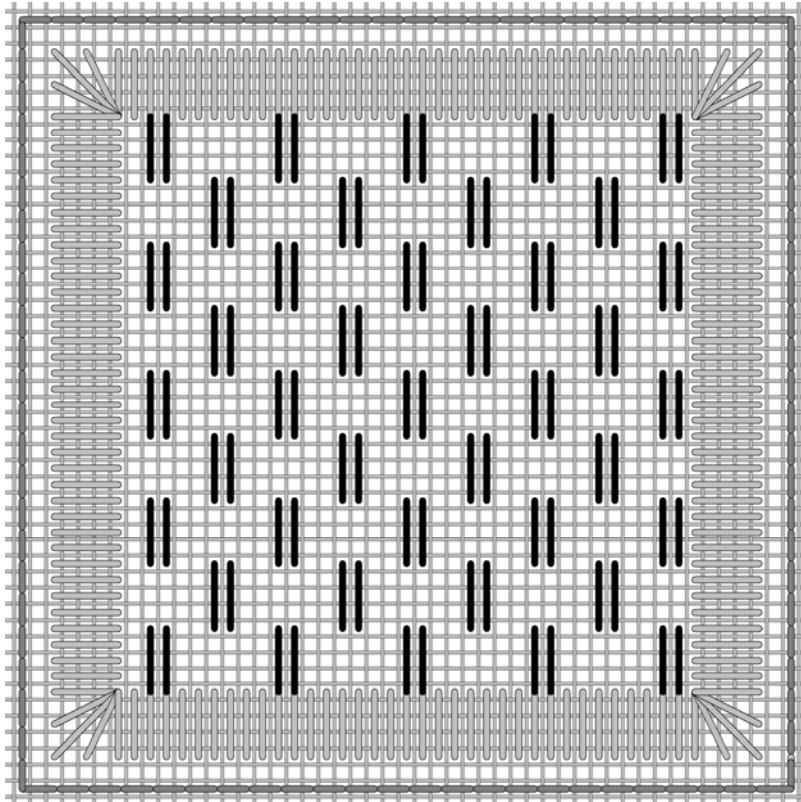
For the second path begin at **1.**
1. in this stitch diagram is seven linen threads to the left of **a**

Stitch down at 2. and pull the thread tight when you stitch up at 3.

Repeat

When moving up on the diagonal, a better result is achieved by stitching up at the top of the satin stitch and down at the bottom of the stitch.

For the next downward path, again stitch up at the bottom of the satin stitch and stitch down at the top of the stitch, as it was for the first path.



Continue on these diagonal paths until the square is completely filled in.

It is the subtle brick pattern the squished linen threads create that I find so attractive.

Gitta's your one stop stitching shop!!

271 Lakeshore Road East, Mississauga, Ontario L5G 1G8

Tel: 905-274-7198 Email: questions@gittas.com

Website: www.gittas.com