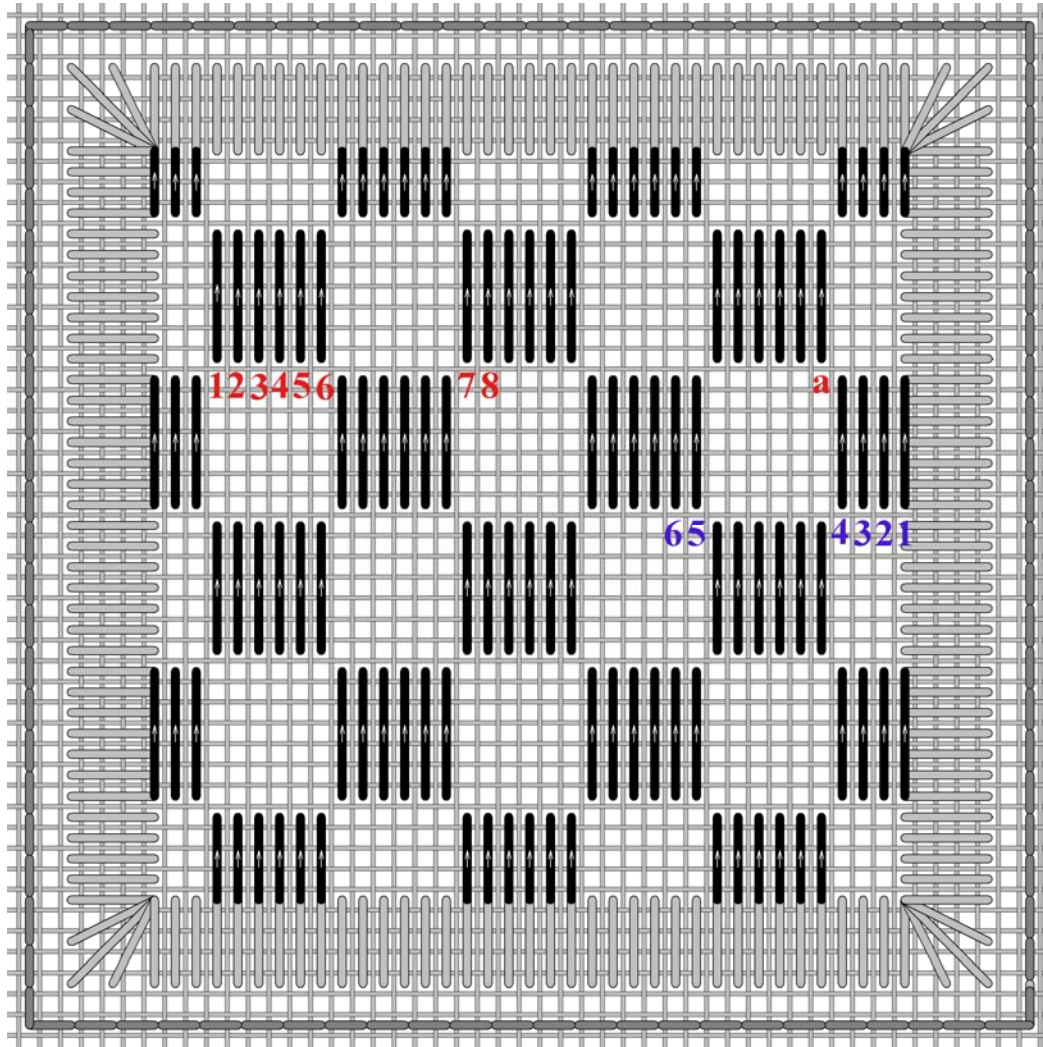


4. Spaced Satin Filling



These Satin stitches are clustered into groups of 6 stitches. Each Satin stitch is stitched over 6 linen threads. Start by stitching up at **1**, which is 10 threads down and 3 threads to the right from the top left corner. Stitch down over 6 linen threads, come up at **2** and pull tight. Stitch down over 6 linen threads and up at **3**. Pull tight.

Continue until all 6 satin stitches are in place.

The next cluster starts at **7**, the 7th hole to the right of **6**. Work to end of row.

For the second pass, or row, start at **1**, which is 7 threads down and 4 threads to the right of **a**. Come up at **1**, stitch down over 6 linen threads, stitch up at **2** and pull tight. In the first cluster there is only room for 4 satin stitches. The next cluster begins at **5**, the 7th hole to the left of **4**.

Continue row by row to fill the square.

The top and bottom rows are composed of "compensated" stitches. When there is a defined shape outline, which surrounds a filling stitch and you are unsure how the stitch will fit, stitch the first pass across the longest path, and then fill the area with shortened or compensated stitches at the border.

This pattern does not fit evenly into the square, so the stitches in the top and bottom rows are shortened to fit. The cluster of stitches at the beginning and ending of each rows also have less satin stitches, so as to fit within the square.

Gitta's your one stop stitching shop!!

271 Lakeshore Road East, Mississauga, Ontario L5G 1G8

Tel: 905-274-7198 Email: questions@gittas.com

Website: www.gittas.com