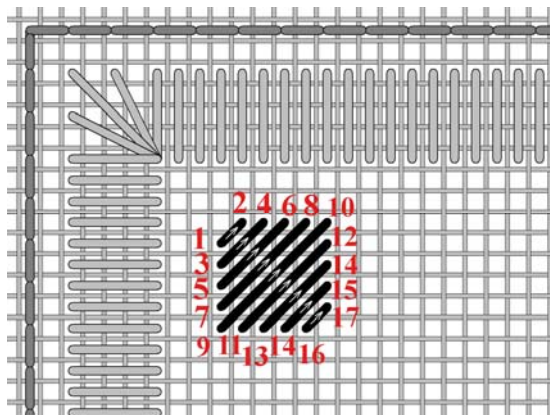


## 6. Pulled Mosaic Stitch

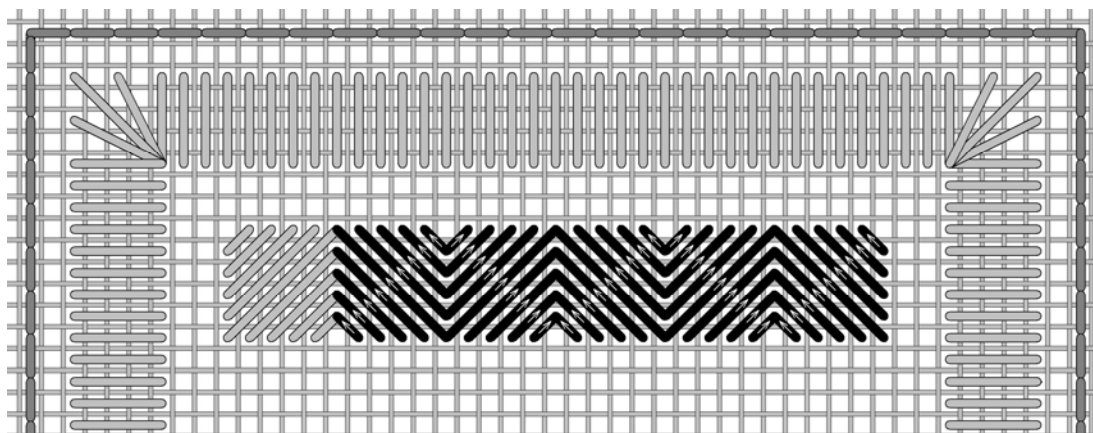
By altering the direction of the satin stitches in each block a definite pattern is created with a grouping of 4 blocks (2 x 2). Because of this, rather than compensating at the end of each row and column, I centered the highest number of blocks possible within the space, (keeping this number within a multiple of 2), and compensating stitches all around the edge.

The starting stitch at **1** is 4 threads down and 3 threads to the right from the top left corner.



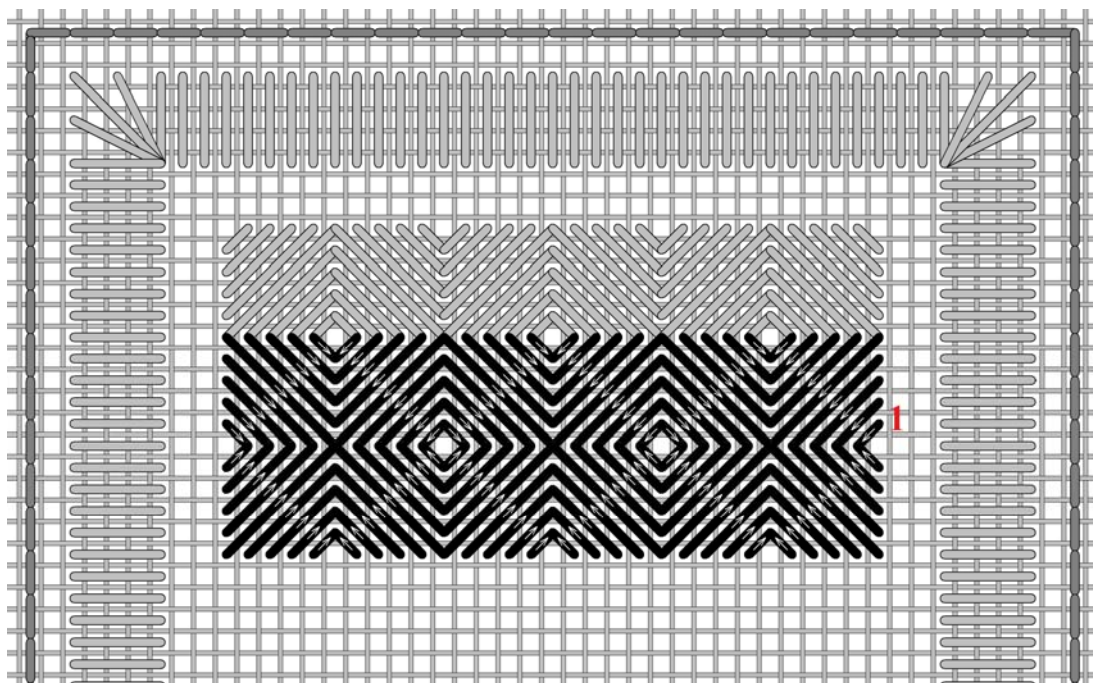
Each block has 9 diagonal stitches. Stitching up at **1** and down at **2**, the first stitch is diagonally over 1 linen thread. Next stitching up at **3** and down at **4**, this next stitch is diagonally over 2 linen threads. Following the sequence of numbers each subsequent stitch is diagonally over 3, 4, 5, 4, 3, 2, 1.

I found that if I pulled too tight I had an extremely hard time distinguishing which hole to stitch into next. So I loosely stitched each block of stitches and then went back over the stitches pulling on each to tighten the stitch.



There are 5 more blocks within this first row.

Follow the direction of the arrows for each block of stitches. The slant changes with each subsequent block.



The second row begins at **1**.

Each block will slant in the opposite direction to the block of stitches above it.

The third row is identical to the first row.

The fourth row is identical to the second.

Continue until you have completed 6 rows.

*Gitta's* your one stop stitching shop!!

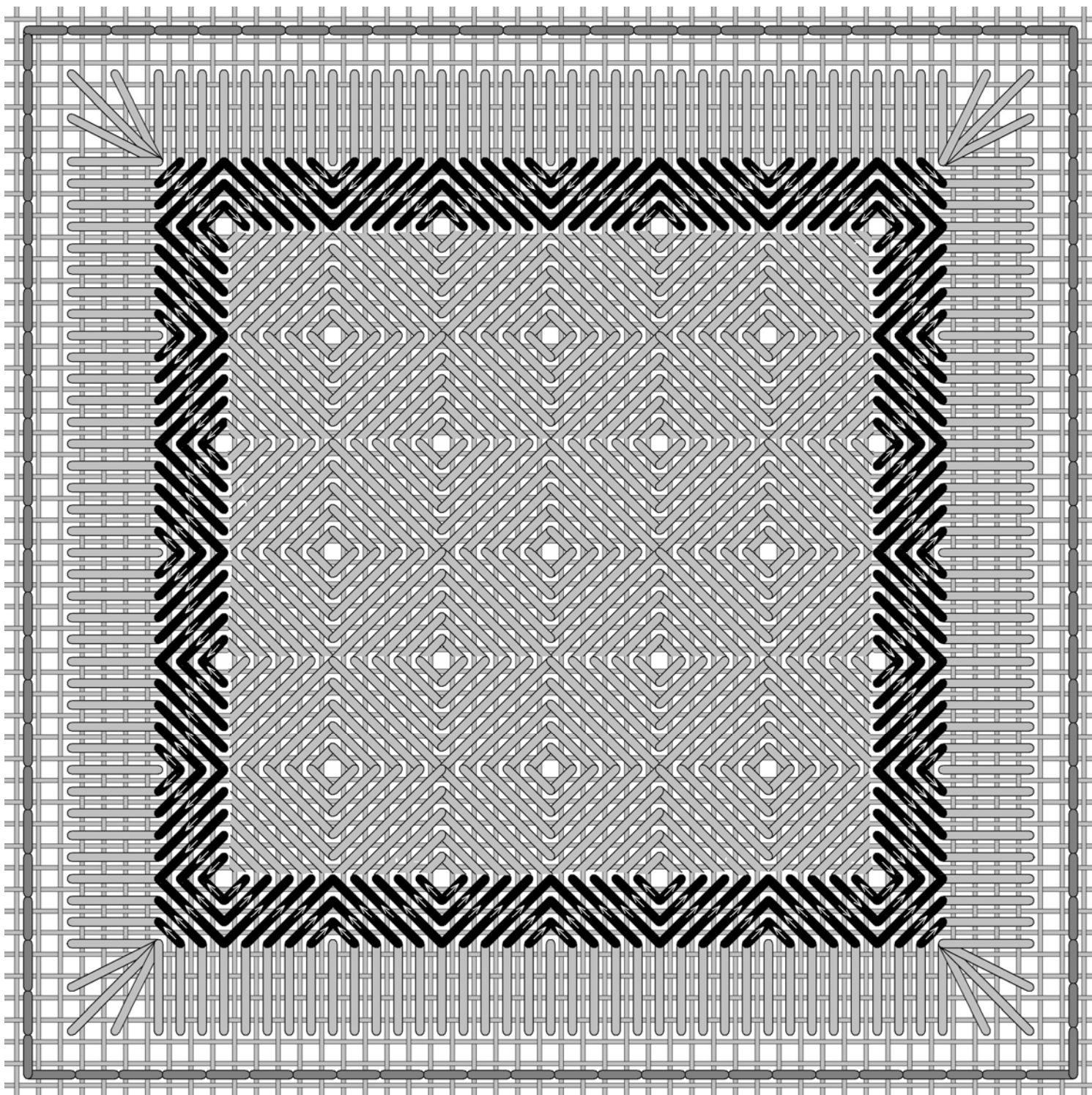
271 Lakeshore Road East, Mississauga, Ontario L5G 1G8

Tel: 905-274-7198 Email: [questions@gittas.com](mailto:questions@gittas.com)

Website: [www.gittas.com](http://www.gittas.com)

## 6. Pulled Mosaic Stitch

If you so desire you could stop now. If, however, you want to fill the entire square then a border of compensation stitches needs to surround this pattern of blocks.



*Gitta's* your one stop stitching shop!!

271 Lakeshore Road East, Mississauga, Ontario L5G 1G8

Tel: 905-274-7198 Email: [questions@gittas.com](mailto:questions@gittas.com)

Website: [www.gittas.com](http://www.gittas.com)