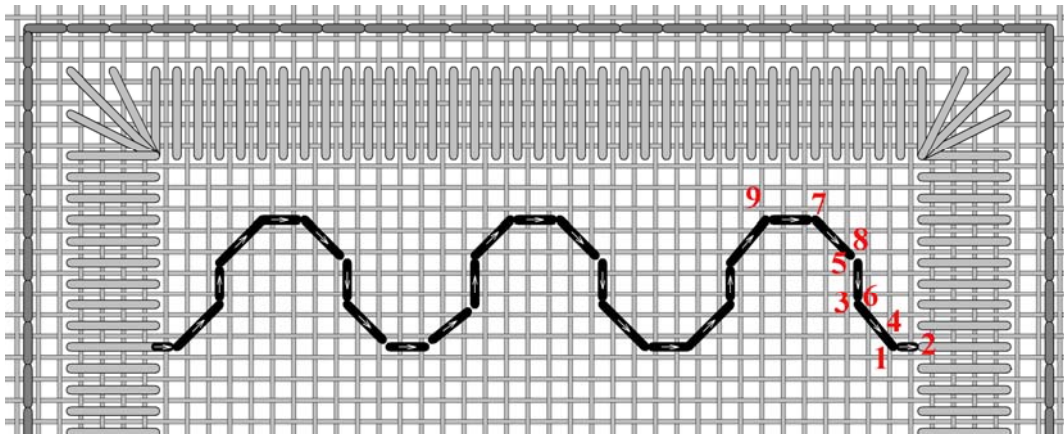


8. Ringed Backstitch

Backstitching is generally used to outline cross stitches, in order to define shapes and detail. When pulled this stitch gives an open appearance; and this stitch looks like a ring of holes surrounding octagons.

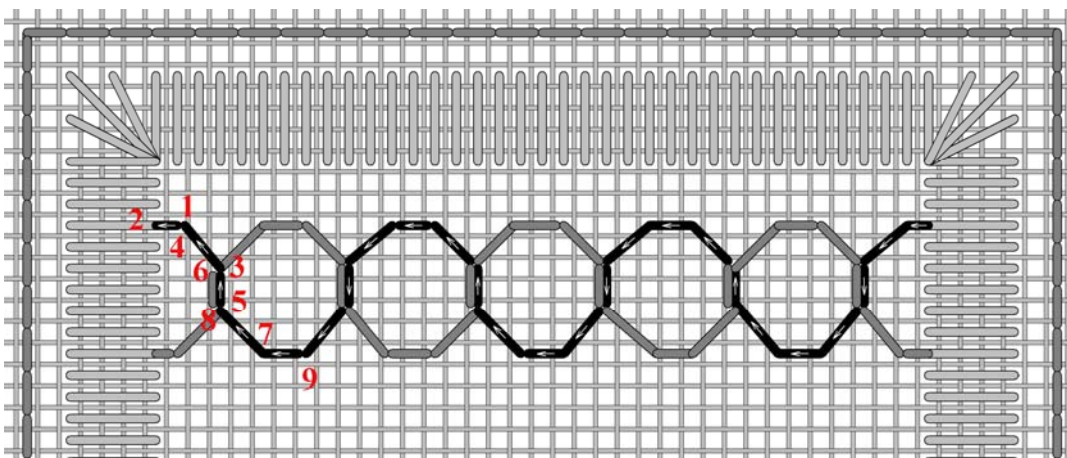
To center this pattern within the space the first and last stitch in each row is a compensating stitch. It is over 1 linen thread. All other stitches are over 2 linen threads).



Begin by stitching up at **1** (9 linen threads down and 2 linen threads to the left from the top right corner), stitch down at **2** (2 linen threads to the right of **1**). Come up at **3**, (2 linen threads up and 2 linen threads to the left of **1**), and pull on your thread.

Next stitch down at **4** (the same hole as **1**), up at **5** (2 linen threads up from **3**) and pull tight.

Continue in this manner. Always stitching ahead with the next stitch and then stitching back into the same hole of the previous stitch. The arrows indicate the direction of the stitch.

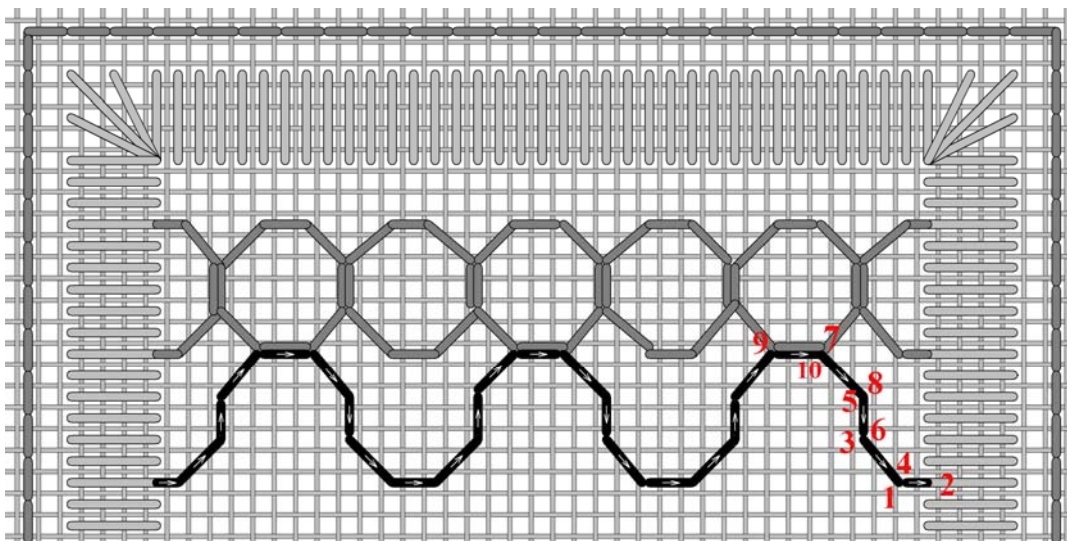


The return trip, to complete the ring, is 6 threads up from the last stitch of the first path.

Come up at **1** (6 linen threads up and 2 linen threads to the right of the previous row). **1** is also 3 linen threads down and 2 linen threads to the right of the top left corner.

Complete the path, always stitching 2 linen threads ahead and then back.

The vertical stitches (stitch **5** to **6**, for example) share the same space as the vertical stitches from the first path.



The third path is identical to the first.

The horizontal stitches (**9** to **10**) share the same space as the horizontal stitches from the row above.

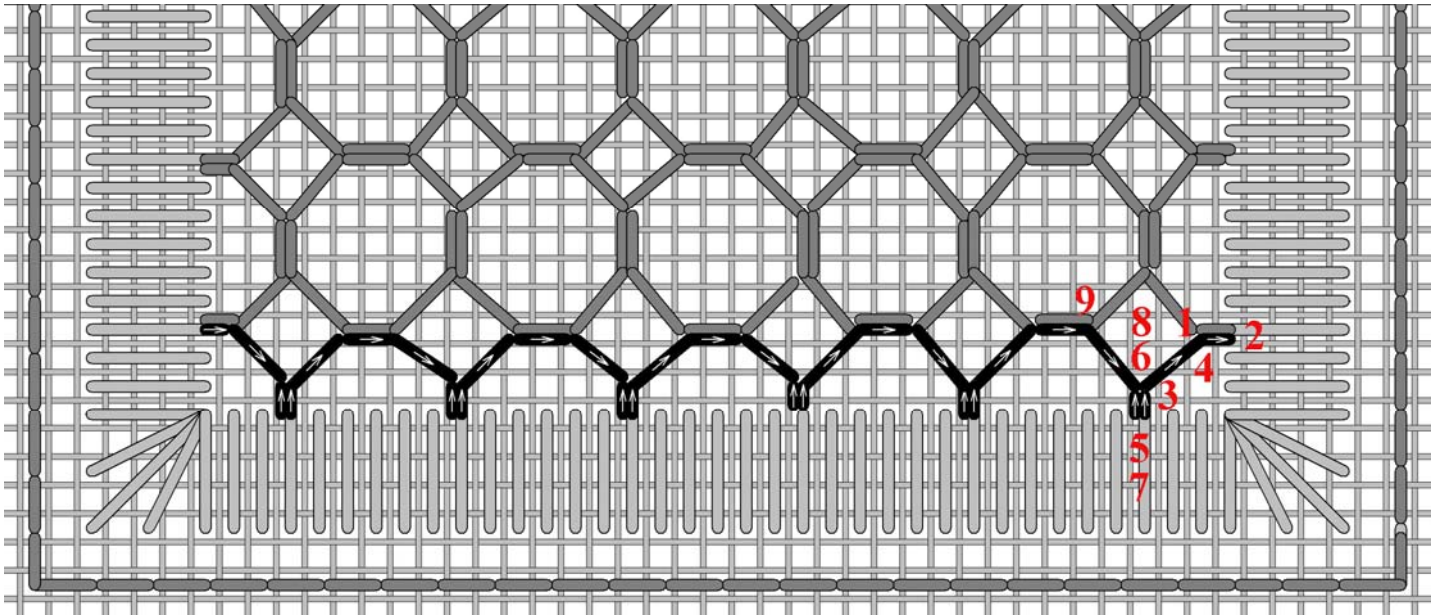
Continue filling the square.

Rows 3, 5, 7, and 9 are the same as the first path.

Rows 4, 6, 8, and 10 are the same as the second path.

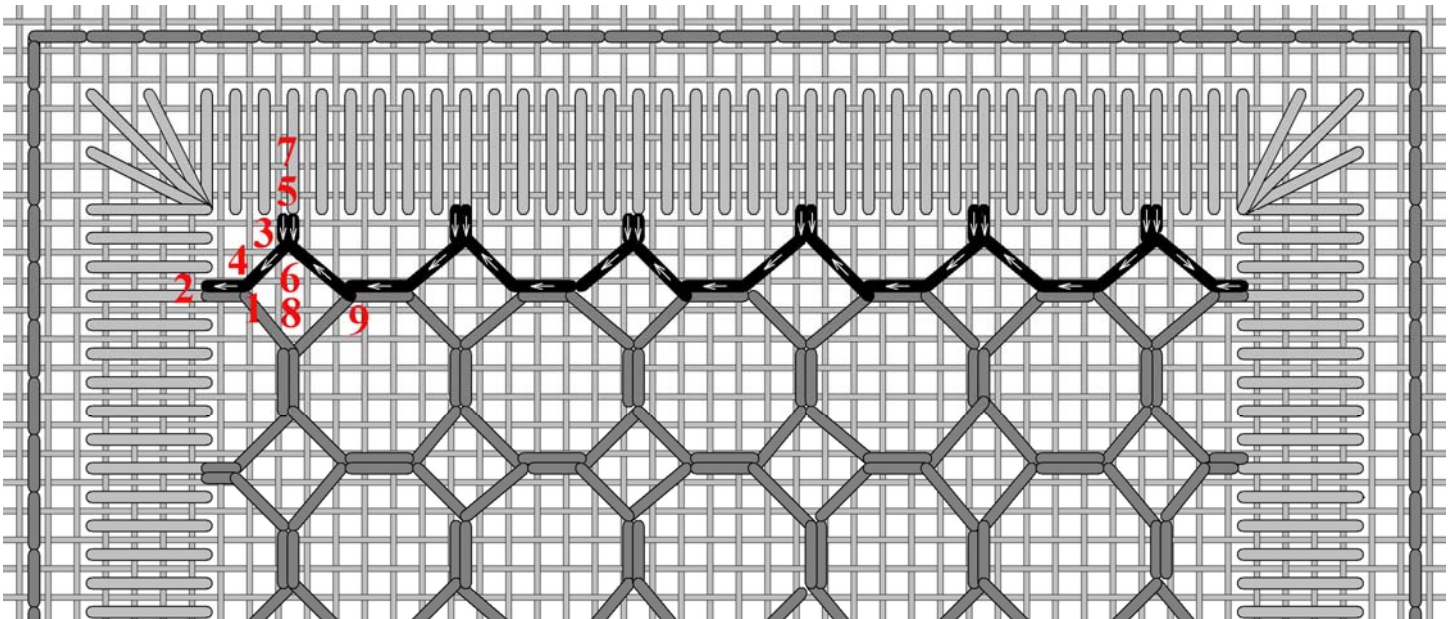
Gitta's your one stop stitching shop!!

271 Lakeshore Road East, Mississauga, Ontario L5G 1G8
Tel: 905-274-7198 Email: questions@gittas.com



The last path is a compensating one. Stitches **5 to 6** and **7 to 8**, are over 1 linen thread.

Due to the nature of these compensating stitches, be sure to anchor your thread in the satin stitch border, before continuing on to stitch **9**. Complete the row in the same manner.



Lastly return back to the top of the square; completing the pattern with another compensating row. Begin at **1**.

Stitches **5 to 6** and **7 to 8**, are again over 1 linen thread, and do not forget to anchor your thread in the satin stitch border, before continuing on to stitch **9**. Complete the row in the same manner.

Gitta's your one stop stitching shop!!

271 Lakeshore Road East, Mississauga, Ontario L5G 1G8

Tel: 905-274-7198 Email: questions@gittas.com

Website: www.gittas.com