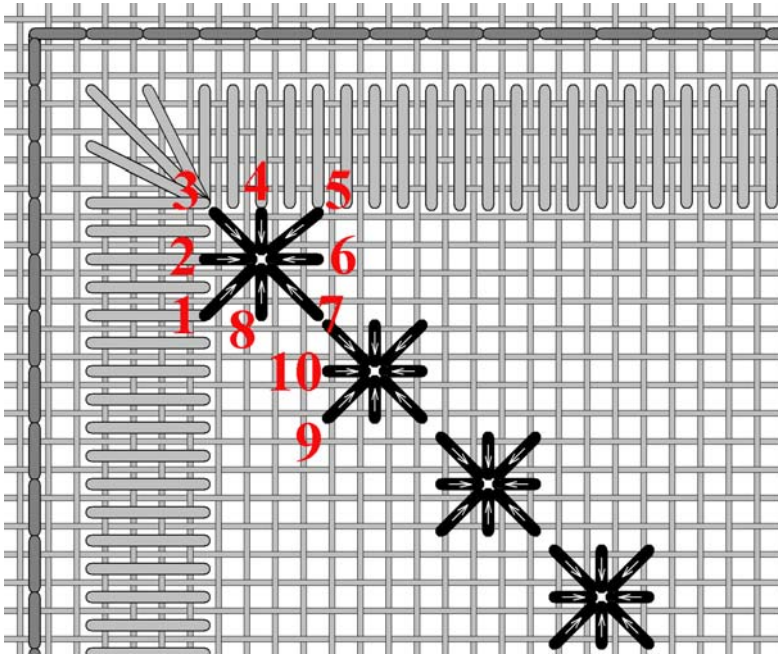


9. Star Eyelet



Each Star Eyelet consists of 8 stitches and all 8 stitches share the same centre fabric hole. Each stitch is over 2 linen threads and the entire Star Eyelet covers an area of 4 x 4 linen threads.

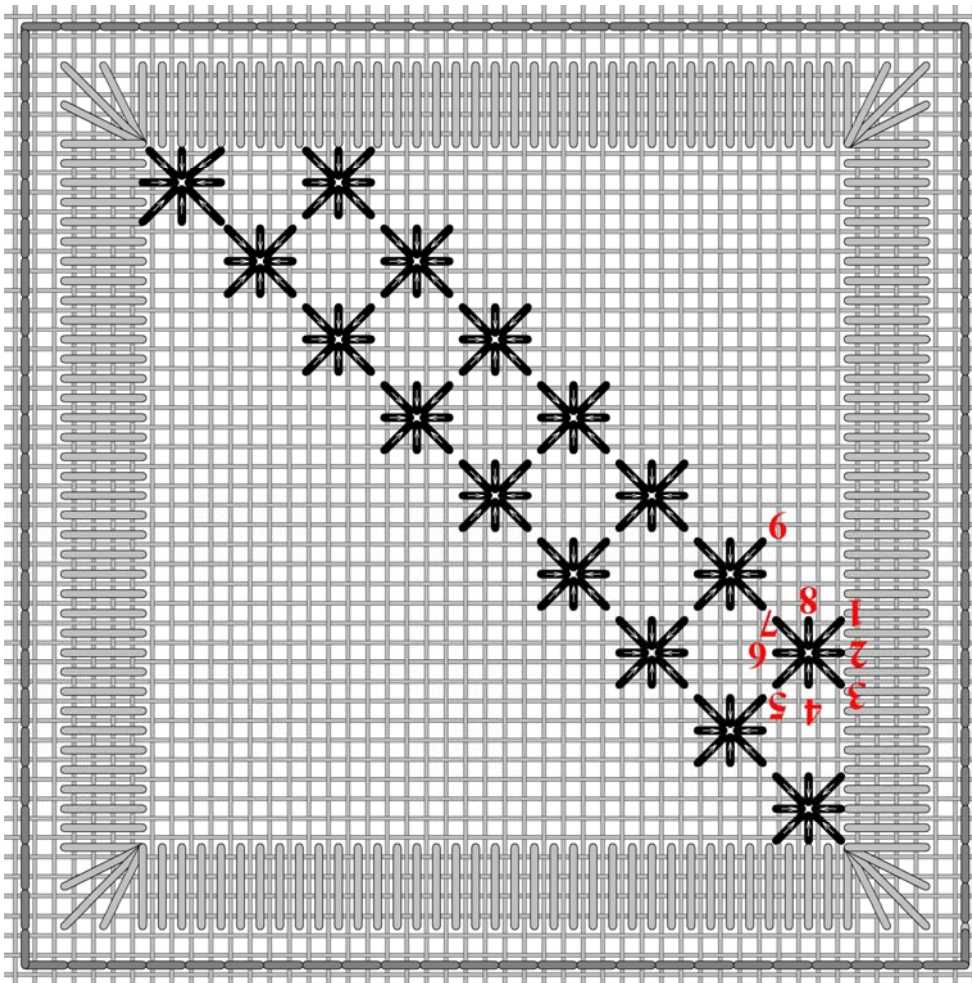
Starting at **1** (4 linen threads down from the left top corner). Stitch into the centre of the Eyelet (2 linen threads up and to the right of **1**). Come up at **2** (2 linen threads above **1**), and pull.

Stitch into the centre (2 linen threads to the right of **2**), stitch up at **3** and pull.

Follow the numbered stitches around the Eyelet, stitching up at the numbers and stitching down in the centre. The arrows indicate the direction of the stitch.

The first stitch of the second Eyelet begins at **9**. **9** is 4 linen threads down and 2 threads to the right of **8**. Complete each Eyelet before continuing to the next.

Continue in this manner, until you reach the bottom right corner.



When you reach the bottom, slip your needle under the border satin stitches on the reverse side. Slip through close to **1**, the first stitch of the first eyelet in the second path.

To maintain the same order around the eyelet and moving down the path, turn your fabric upside down. Feel free to also turn the stitch diagram upside down.

Continue until the square is filled.

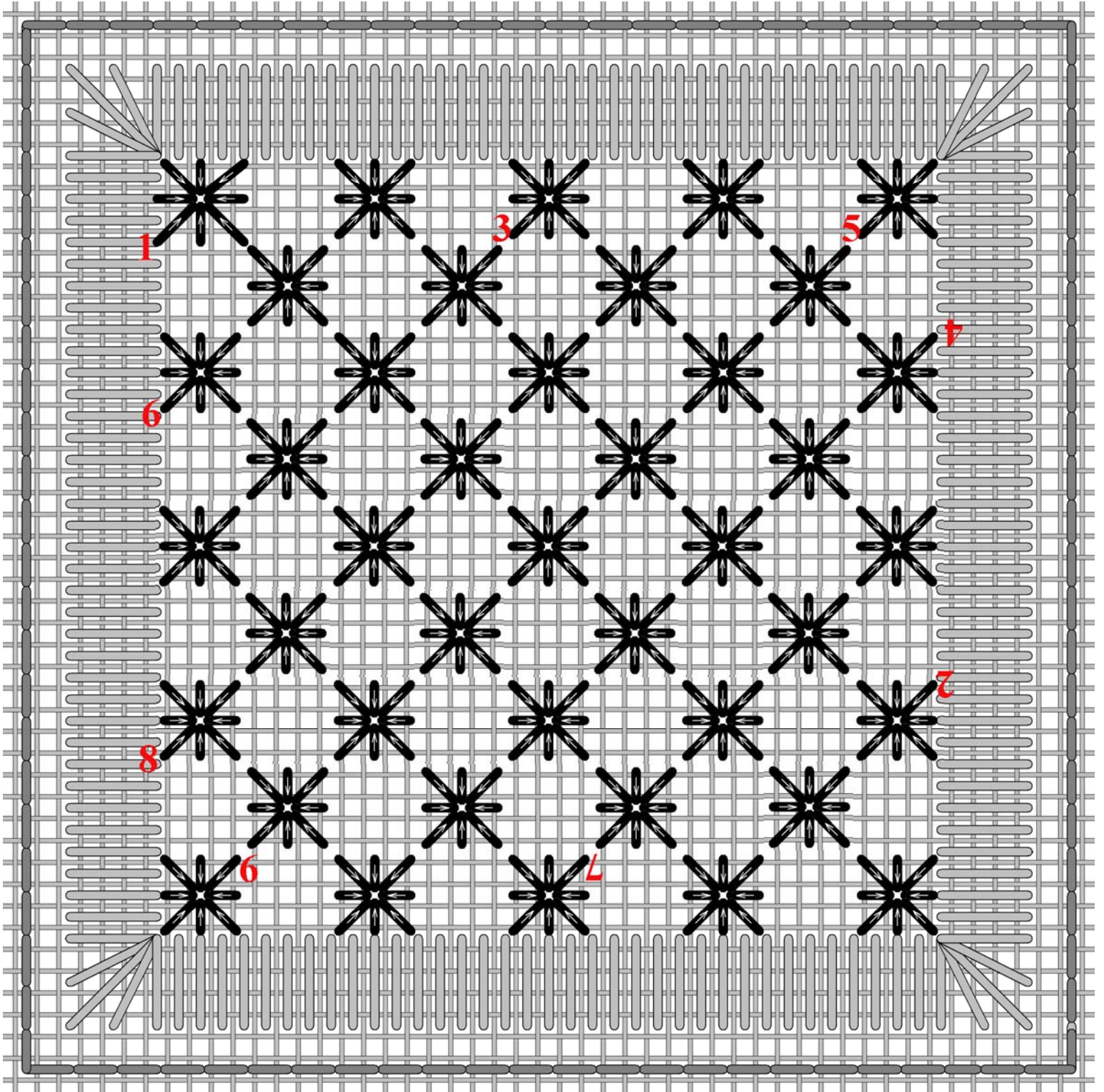
In the stitch diagram on the next page, each path is numbered. The numbers indicate the stitching order of the paths (rows). These numbers are also positioned to indicate the first stitch of each eyelet within each path. Don't forget to turn the fabric upside down every time a new row is begun.

Gitta's your one stop stitching shop!!

271 Lakeshore Road East, Mississauga, Ontario L5G 1G8

Tel: 905-274-7198 Email: questions@gittas.com

Website: www.gittas.com



Gitta's your one stop stitching shop!!

271 Lakeshore Road East, Mississauga, Ontario L5G 1G8
Tel: 905-274-7198 Email: questions@gittas.com
Website: www.gittas.com